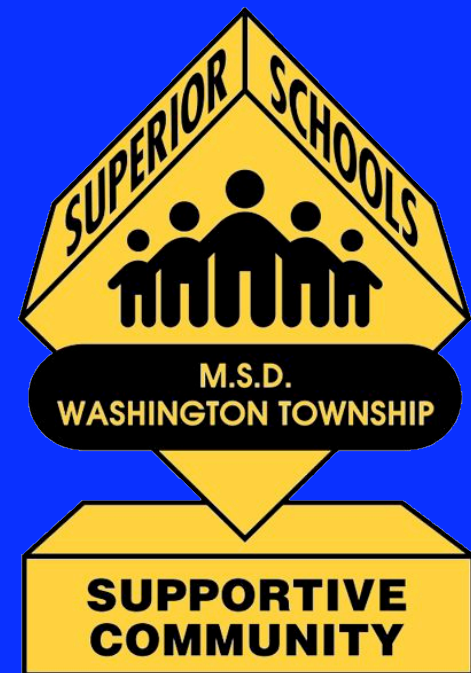


M.S.D. Washington Township Enrollment Management



Board of Education
January 22, 2009



Elementary School Enrollment Management

Options

1. Maintain current status
2. Add 2 Portable Classrooms
CC, GB, and JS
3. Construct 2 classrooms
CC, GB, and JS



Elementary School Enrollment Management

Maintain current status



Elementary School Enrollment Management

Portable Classrooms

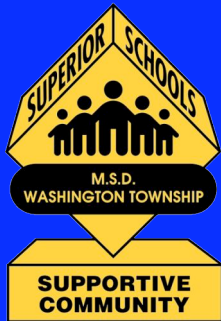
- \$175,000 - \$200,000 per unit
- Operational costs - above grade
- “Who gets stuck in the portable”
- Location
- Not a permanent asset



Elementary School Enrollment Management

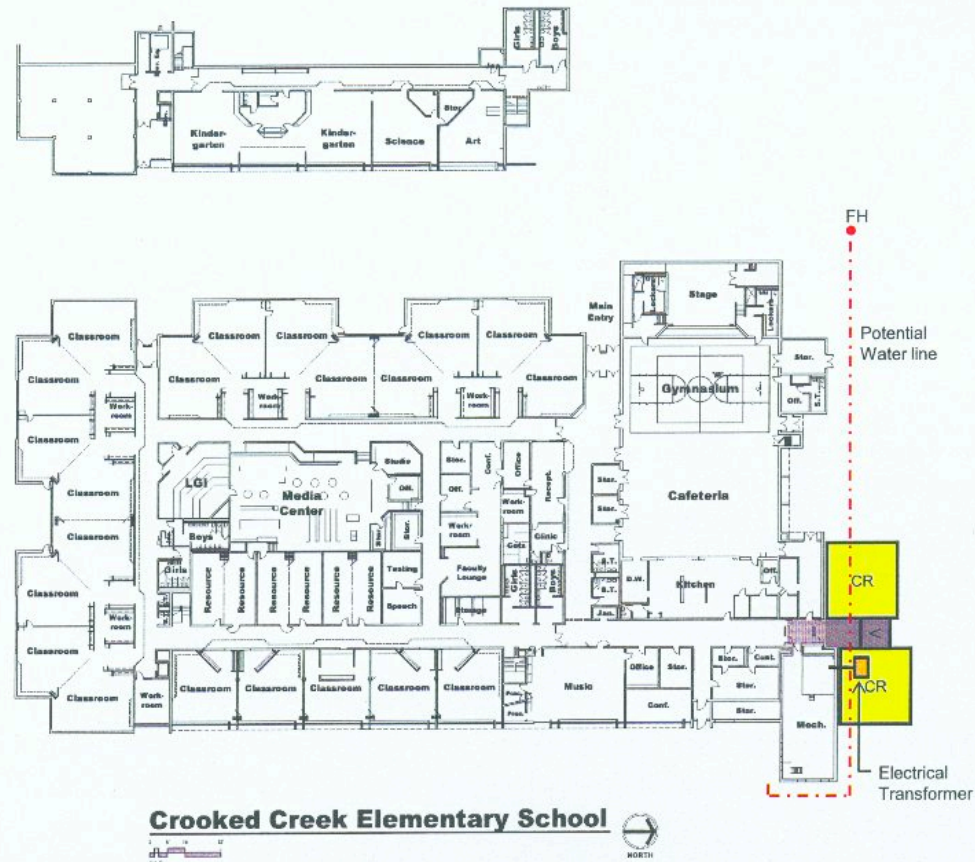
Constructed classrooms

- Approximately 1000 sq. ft.
- Relatively simple construction
 - concrete slab on grade with CMU walls
 - exterior to match/compliment existing finishes
 - no under-slab plumbing
 - use existing HVAC



Elementary School Enrollment Management

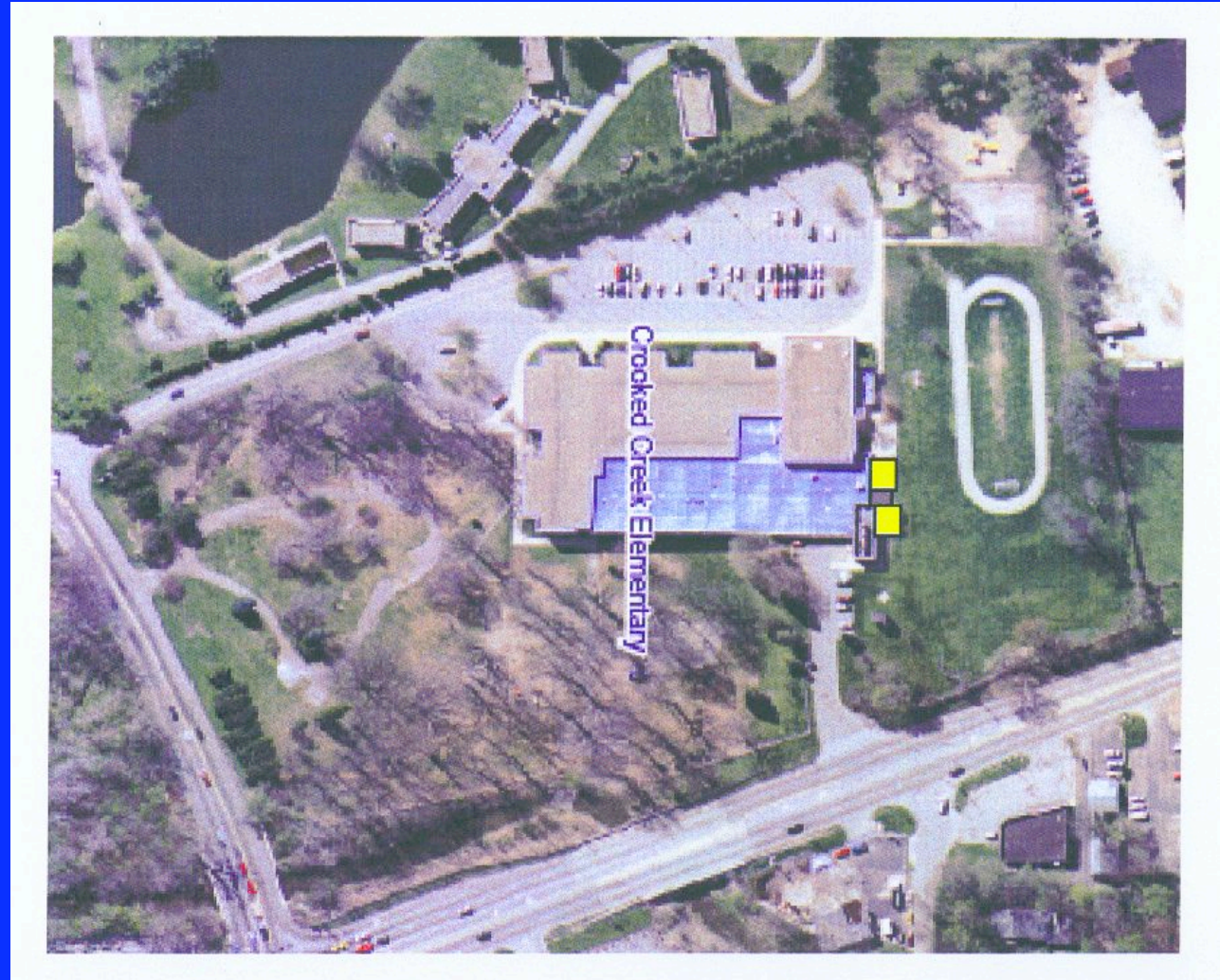
Crooked Creek School





Elementary School Enrollment Management

Crooked Creek School

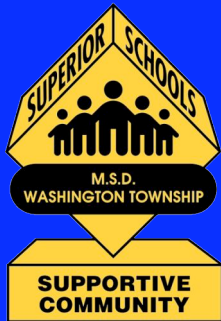




Elementary School Enrollment Management

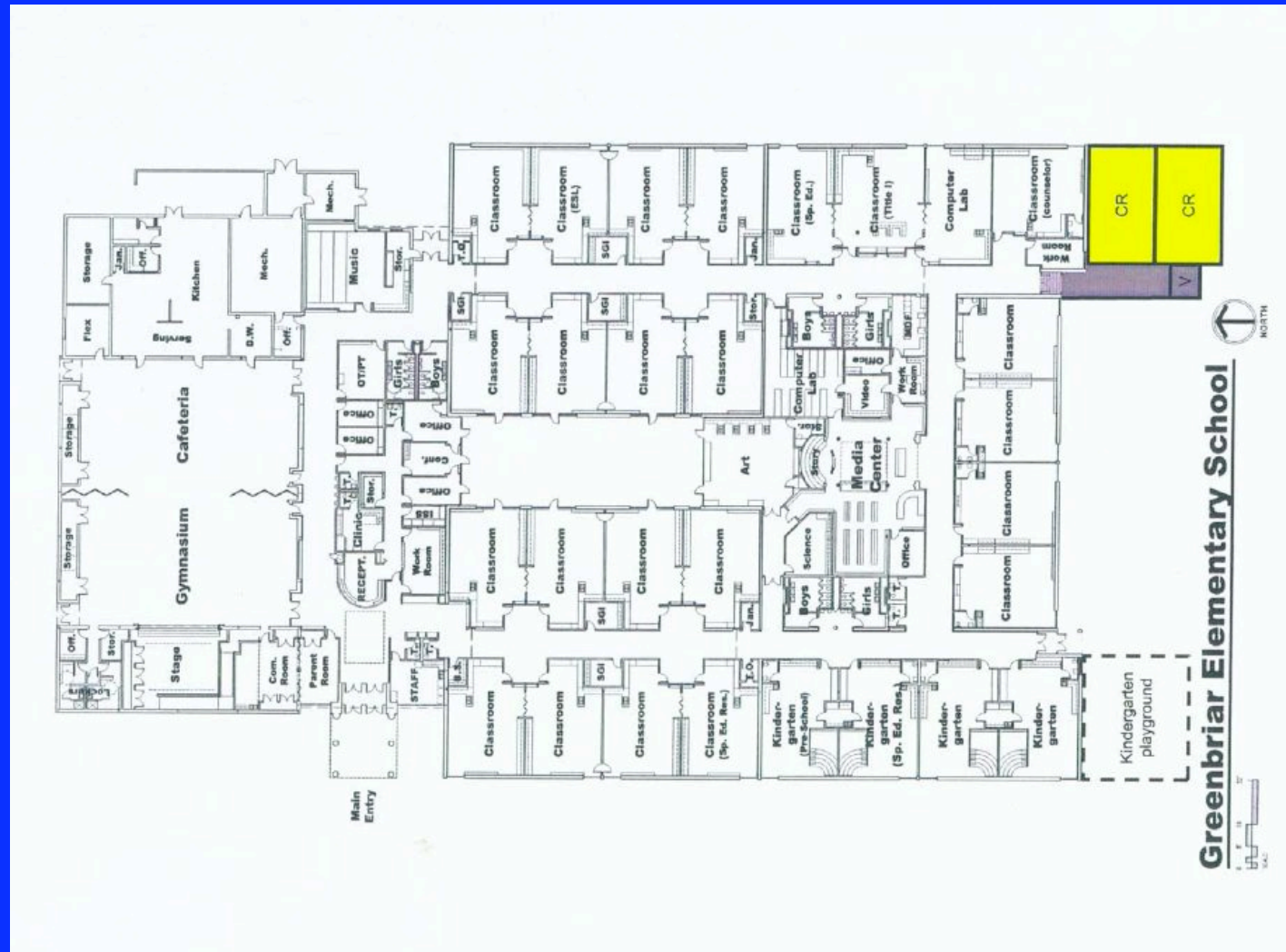
Crooked Creek School





Elementary School Enrollment Management

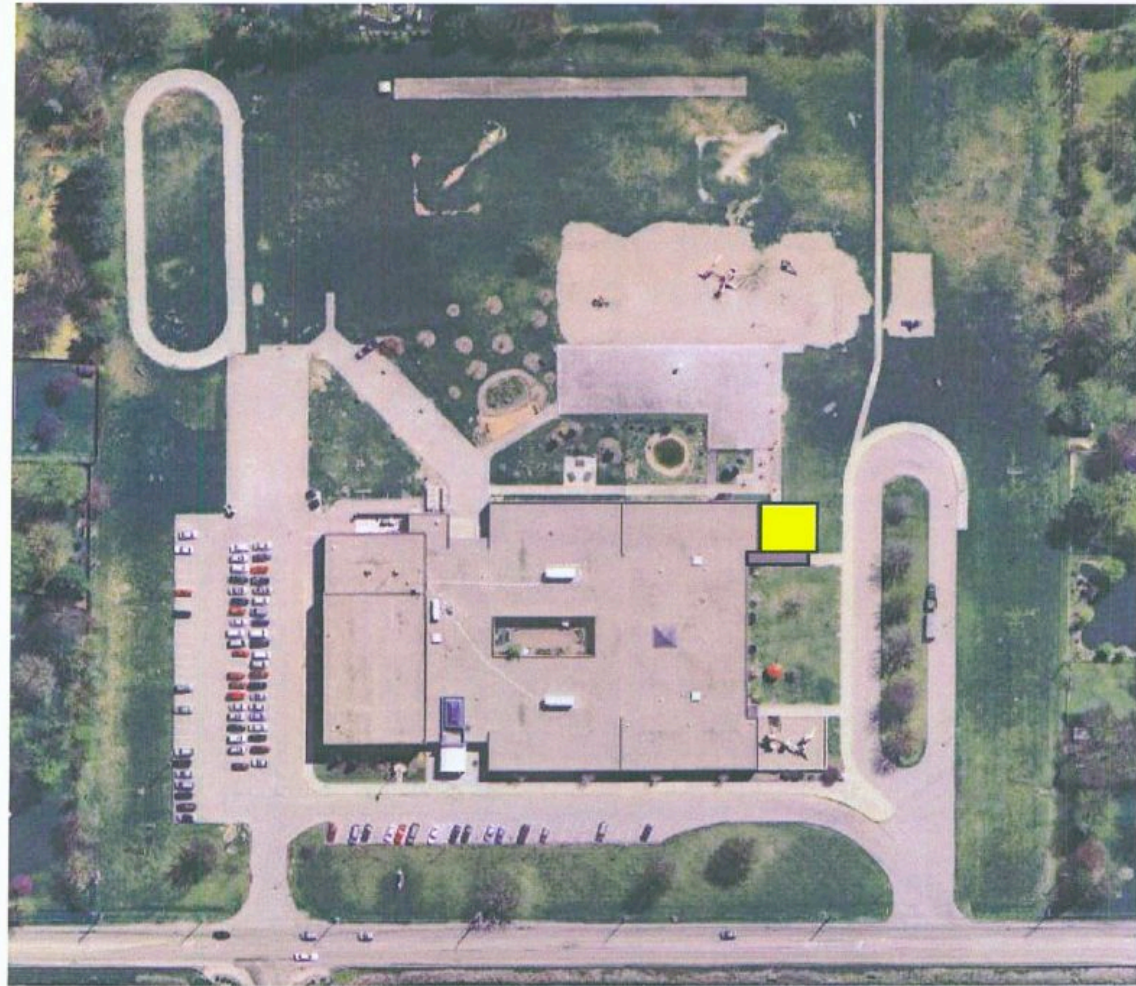
Greenbriar School





Elementary School Enrollment Management

Greenbriar School

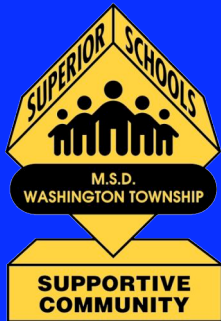




Elementary School Enrollment Management

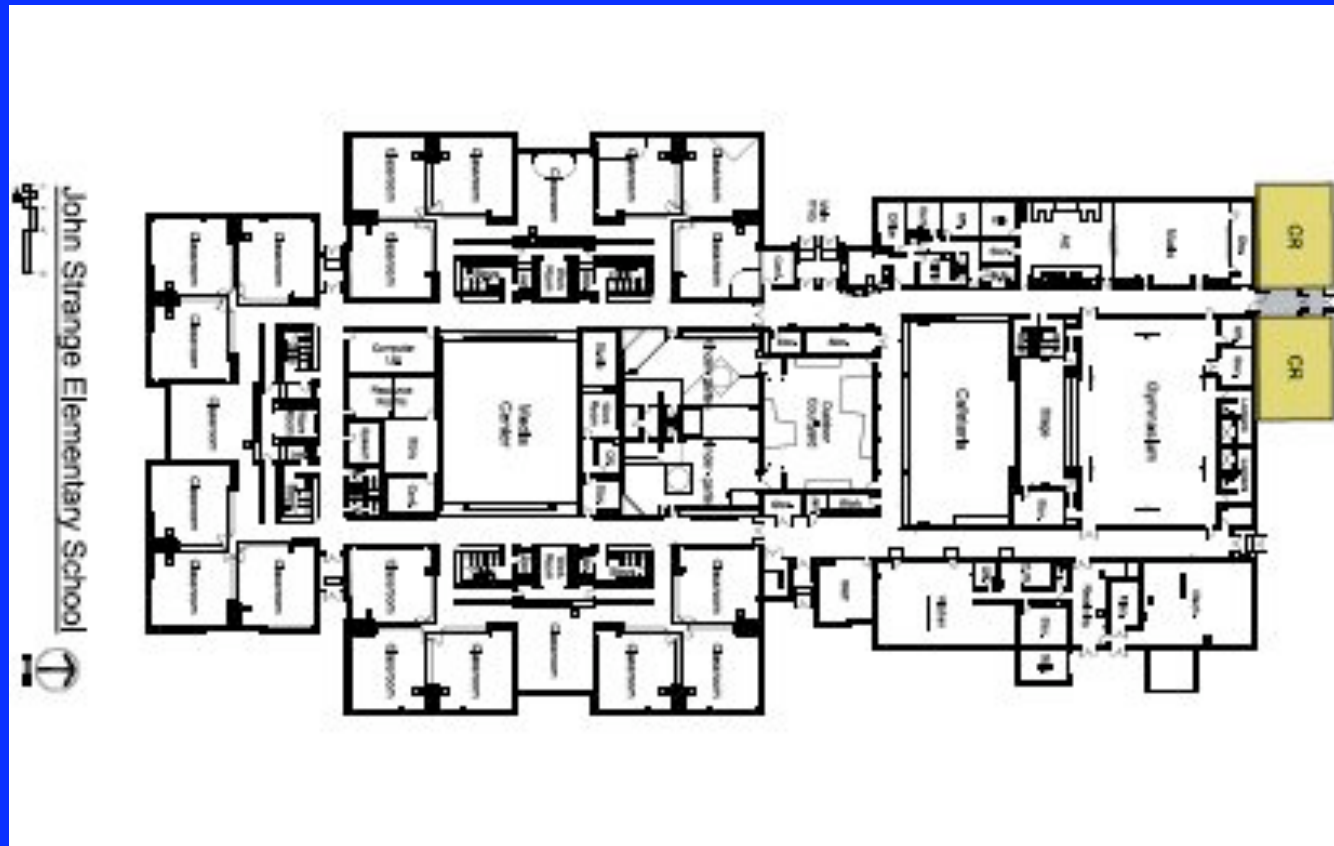
Greenbriar School





Elementary School Enrollment Management

John Strange School





Elementary School Enrollment Management

John Strange School





Elementary School Enrollment Management

John Strange School





Elementary School Enrollment Management

Estimated soft costs
\$150,000

Estimated construction costs
\$1,500,000



Elementary School Enrollment Management

Funding source

- Capital Projects Fund / G.O. Bond Issue



Elementary School Enrollment Management

Options

1. Maintain current status
2. Add 2 Portable Classrooms
CC, GB, and JS
3. Construct 2 classrooms
CC, GB, and JS



Elementary School Enrollment Management

Questions and Discussion