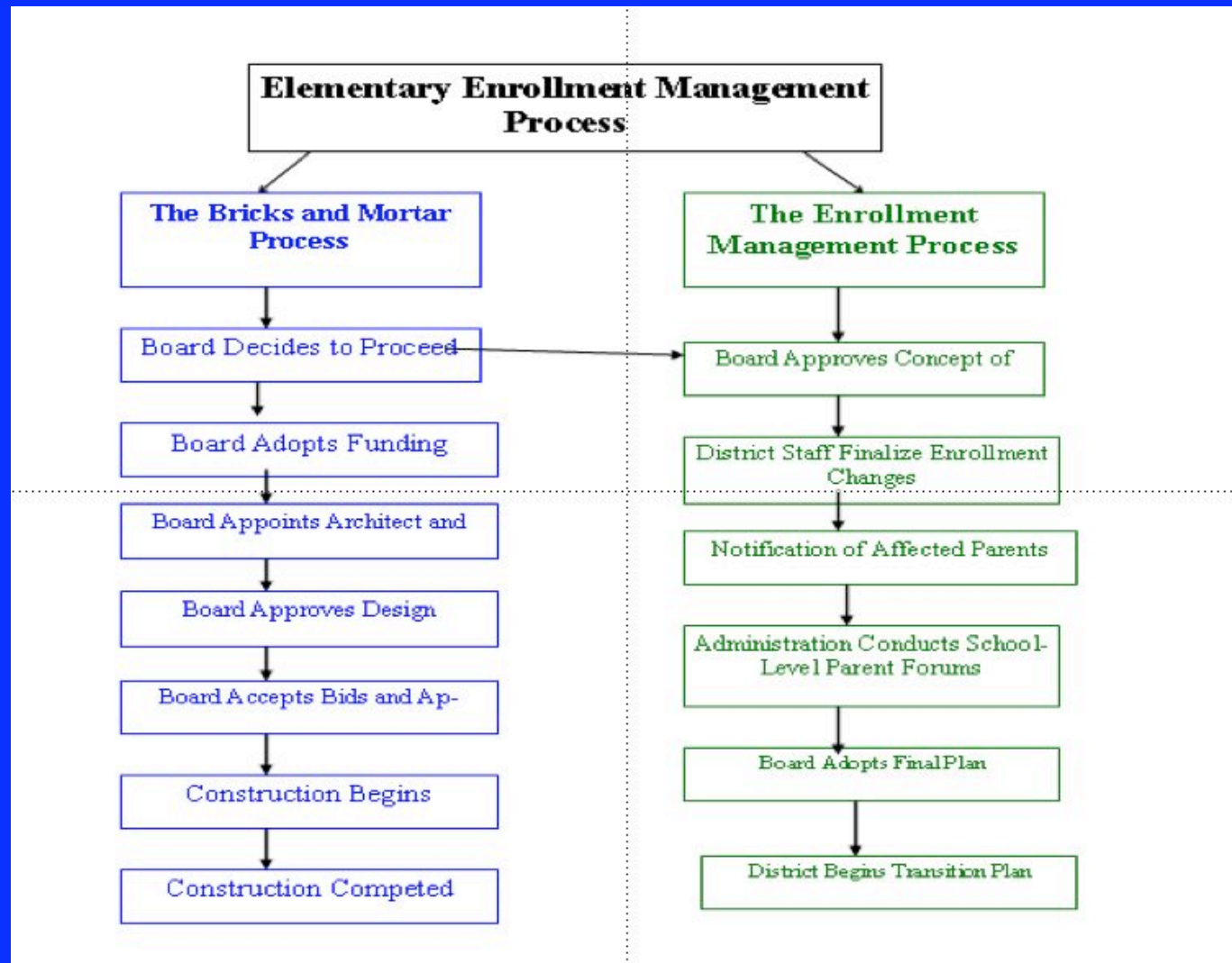
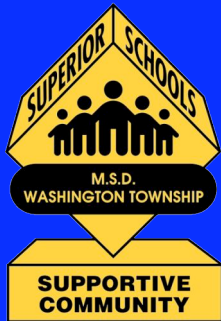


# Elementary School Enrollment Management

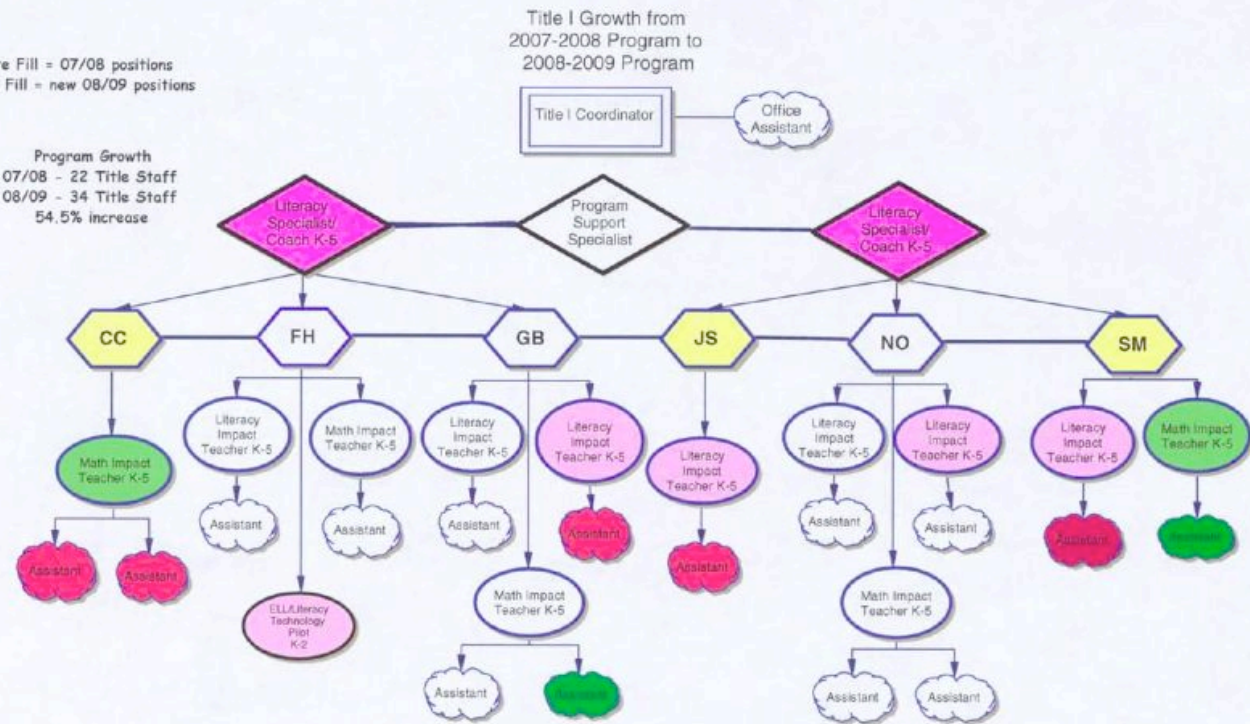




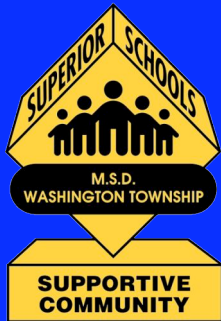
# Additional Title One Services by School

White Fill = 07/08 positions  
Colored Fill = new 08/09 positions

Program Growth  
07/08 - 22 Title Staff  
08/09 - 34 Title Staff  
54.5% increase

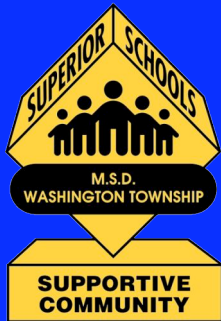


	Crooked Creek	Fox Hill	Greenbriar	John Strange	Nora	Spring Mill
2007-2008 Classrooms Used	0	2	2	0	1.5	0
2008-2009 Classrooms Used (current)	1 Small Room (Assistants teach between classrooms)	2 + part of computer lab	1 + reconstructed parent room	On the stage	2 slightly smaller than full classrooms	1 very small room & 1 slightly smaller than a classroom
Current Room Shortage for Title I	1 Working between classrooms is noisy	0 Not optimal, but will work.	2 Parent Room is too small for four groups	1 (between gym and café – very noisy)	.5 Math class is too small for 3 groups	0 Not optimal, but will work.



# ELL Students by School

MSD Washington Township Limited English Proficient Students			
School	ESL Teachers		# of
	2008-09	2008-09	ESL Classrooms
PRE-K @ Nora	26	1	1
AV	51	1	Office (no classroom space)
CC	30	1	Table in Corner of Workroom (no space)
FH	201	2	1
GB	117	1	0
HC	N/A	N/A	N/A
HT/WY	N/A	N/A	N/A
JS	35	1	Office (no classroom space)
NO	295	2	2
SM	106	1	1
EW	40	1	1
NV	117	2	2
WL	75	1	1
NC	199	2	2
<b>TOTAL</b>	<b>1292</b>		



## Cost of developing additional instructional space for Title 1, ELL, and Special Education

Crooked Creek	\$1,970.31
Fox Hill	\$7,236.19
Greenbriar	\$14,139.69
Hilltop	\$13,534.00
John Strange	\$9,000.00
Nora	\$11,020.00
Spring Mill	\$16,599.00
	\$73,499.19