

MSD of Washington Township

Project Update For:

Clearwater Elementary School

and

Willow Lake Elementary School

December 13, 2017



CSO Architects
ARCHITECTURE • INTERIOR DESIGN



Jesse J. Wilkerson &
ASSOCIATES

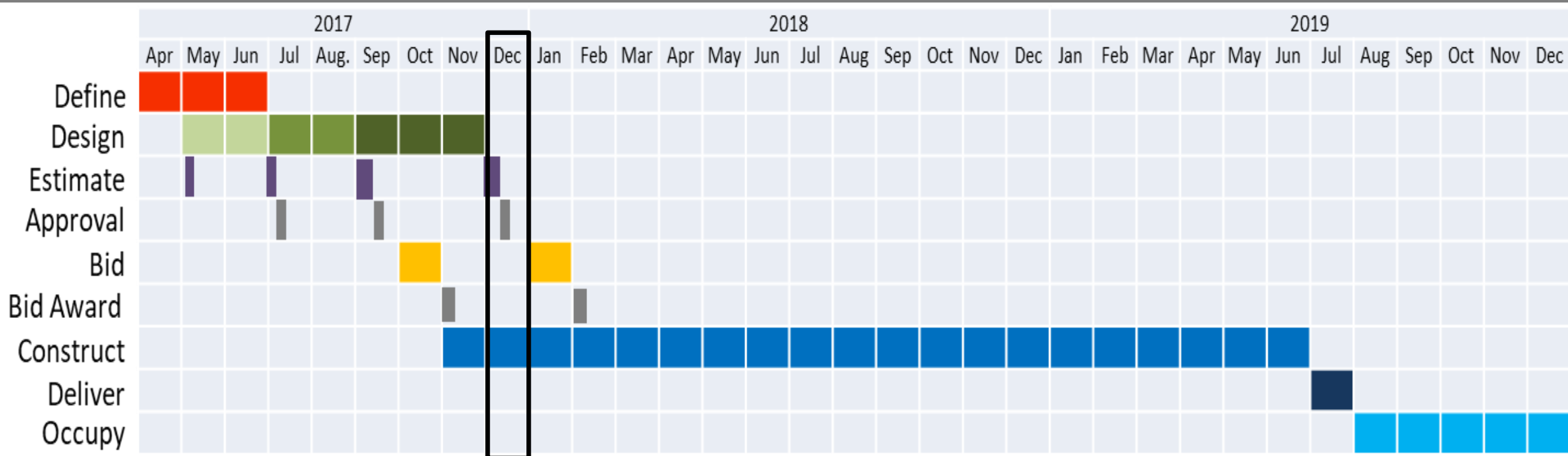


RM CONSULTING
AND ENGINEERING

Ross & Baruzzini



Project Schedule



28 Months

Keep in Mind:

- **Most cost-effective use of taxpayers' dollars**
- **Material selection is based on efficient use of project budget, longevity, and low-maintenance**
- **Furniture shown in renderings are for spatial reference**
- **Secure Entrance and Reception process was high priority**

Water provides essential life elements through multiple forms and replenishes itself through the water cycle. Respecting our streams and oceans teaches integrity across the globe.

The tree respects the Earth by giving back what it takes through its roots and dropping its fruits and leaves to replenish. It knows that everything it gives will return to it.

**“The aim of all IB programs is to develop internationally minded people who, recognizing their humanity and shared guardianship of the planet, help to create a better and more peaceful world.”
Water and Tree represent the Learner Profile:**

We are all a part of this green earth. What is potential for one, is potential for all.

- INQUIRERS**
- KNOWLEDGEABLE**
- THINKERS**
- COMMUNICATORS**
- PRINCIPLED**
- OPEN-MINDED**
- CARING**
- RISK-TAKERS**
- BALANCED**
- REFLECTIVE**

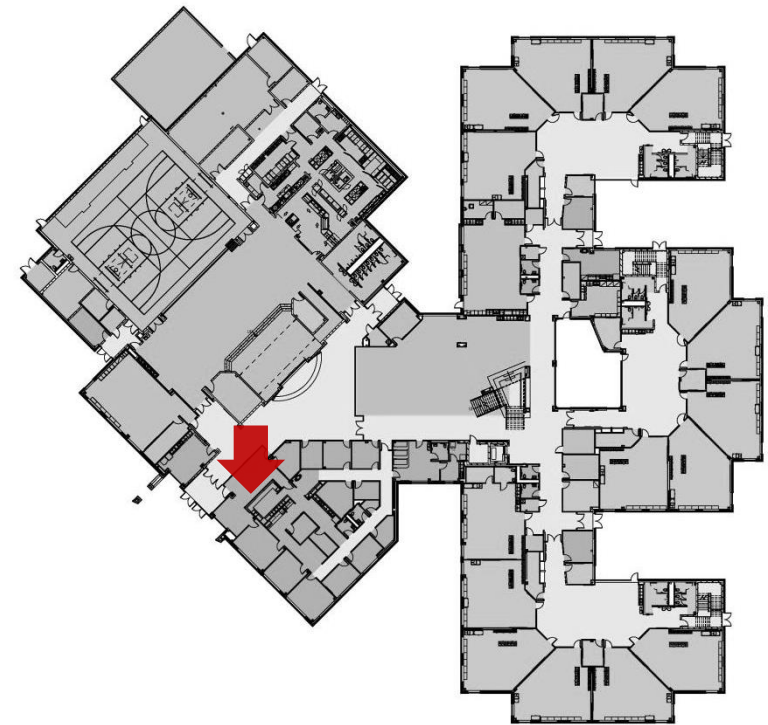


Clearwater



Main Office Reception Desk

Willow Lake

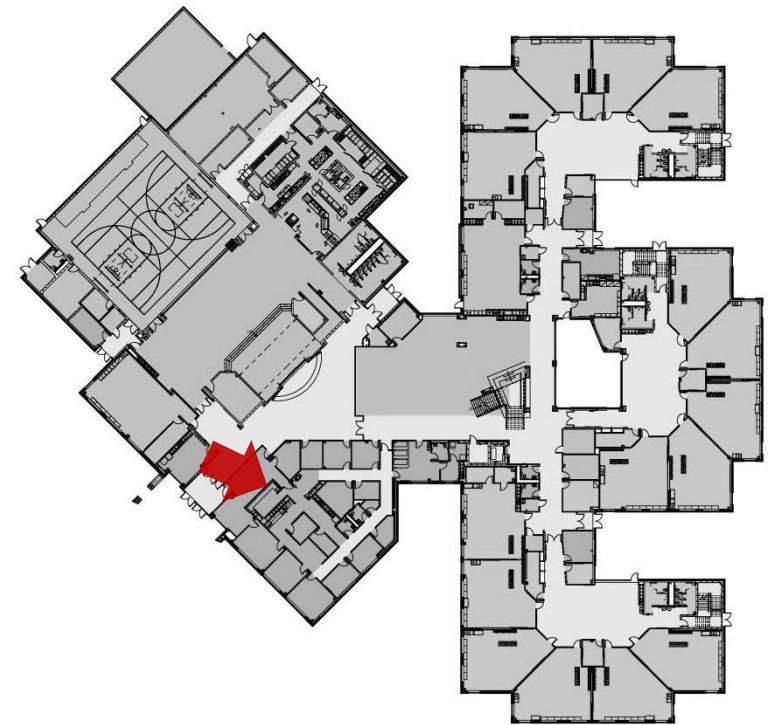


Clearwater



Main Office Reception Desk

Willow Lake

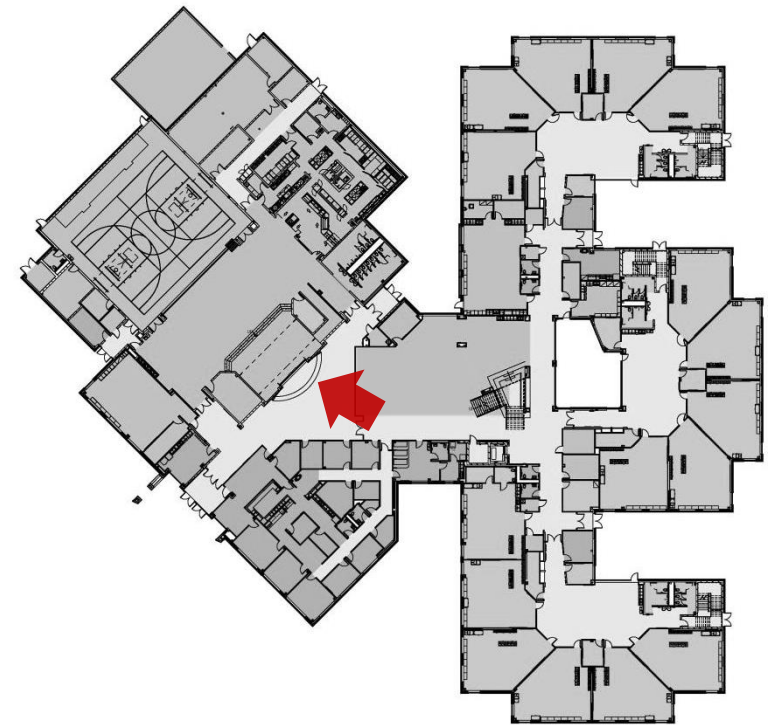


Clearwater



Event Lobby Raised Platform

Willow Lake

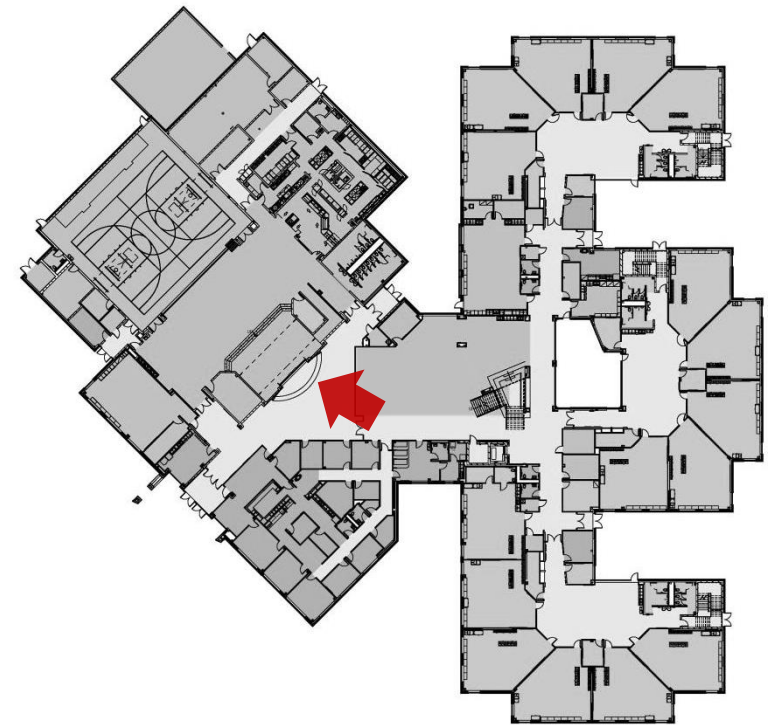


Clearwater



Event Lobby
Raised Platform

Willow Lake



Clearwater



Dining Commons

Willow Lake

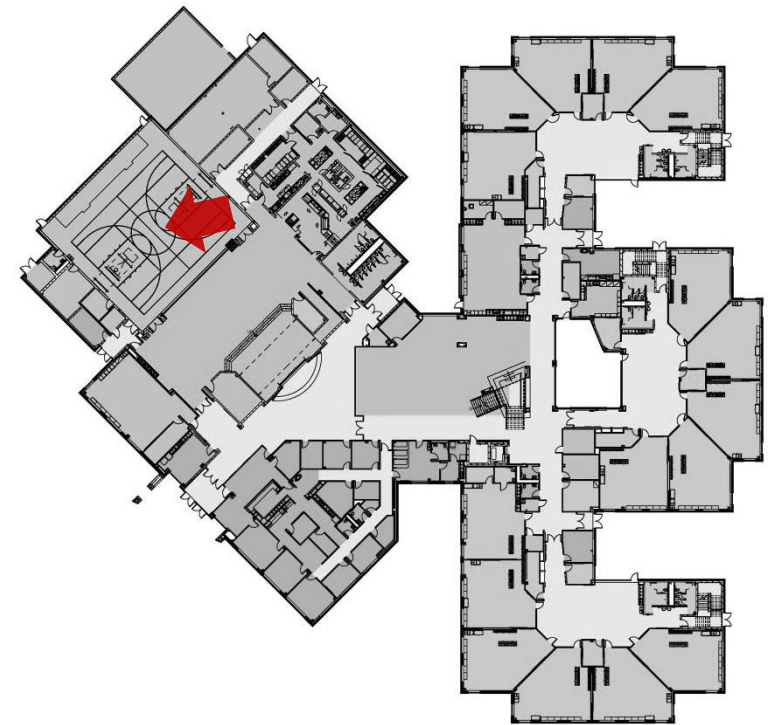


Clearwater



Gymnasium

Willow Lake

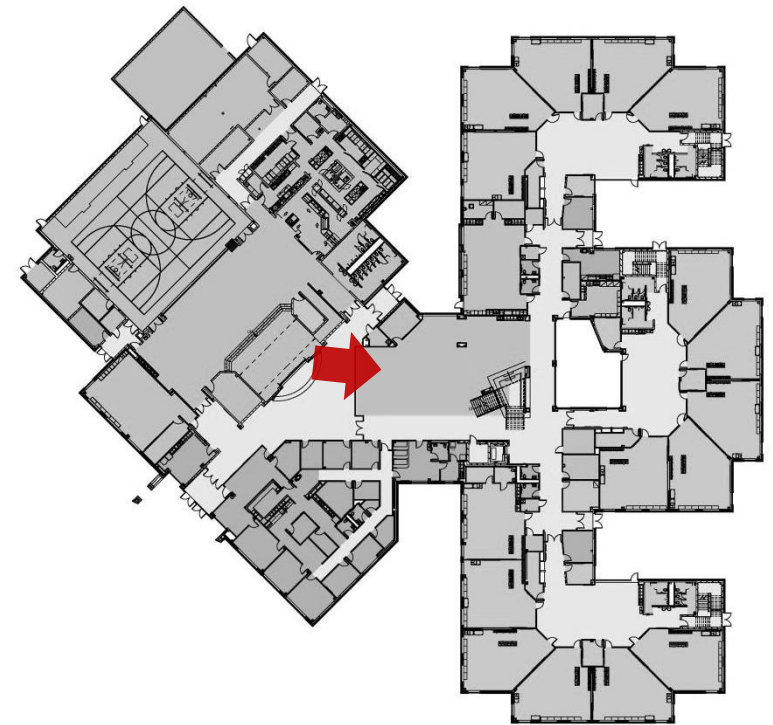


Clearwater



Discovery Center

Willow Lake

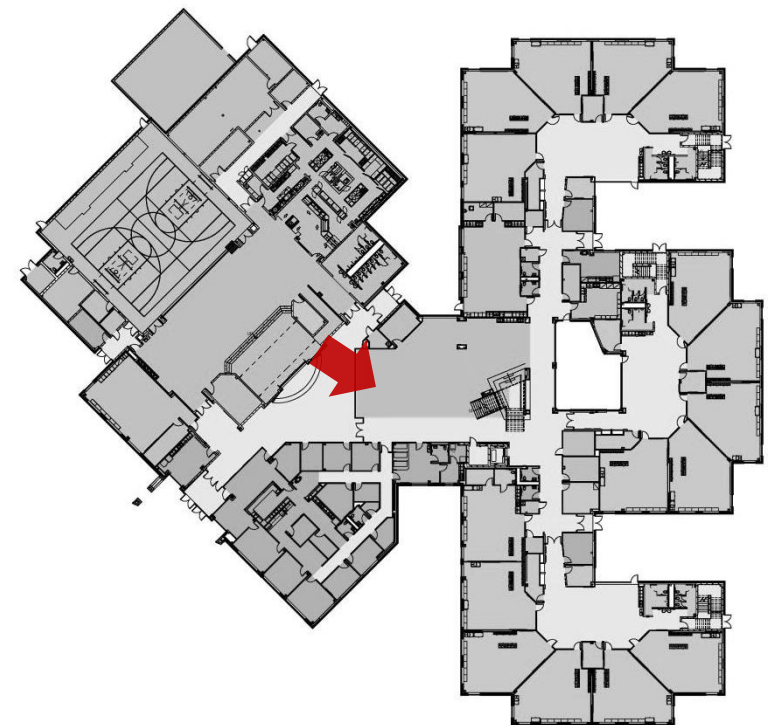


Clearwater



Discovery Center

Willow Lake

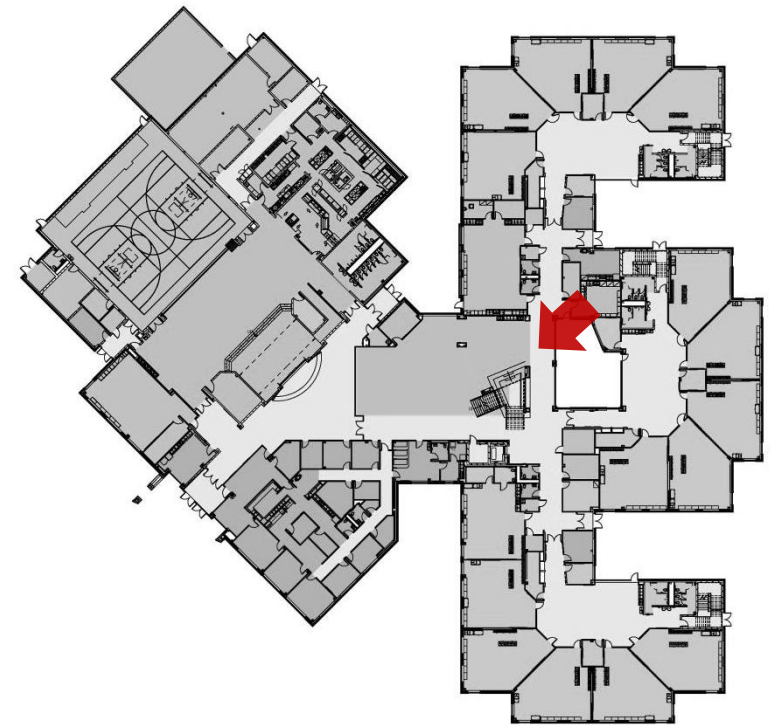


Clearwater



Discovery Center

Willow Lake

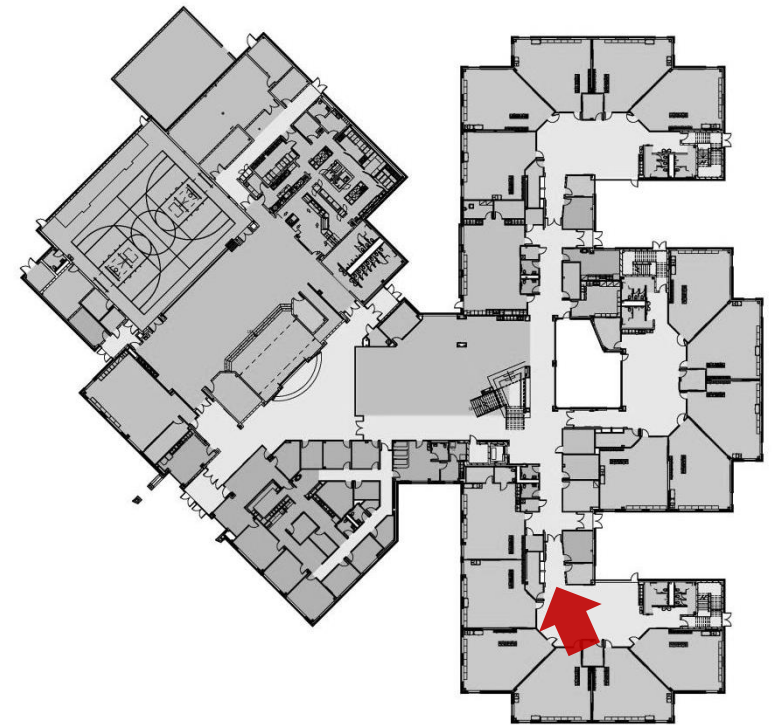


Clearwater



Neighborhood
Entrance

Willow Lake

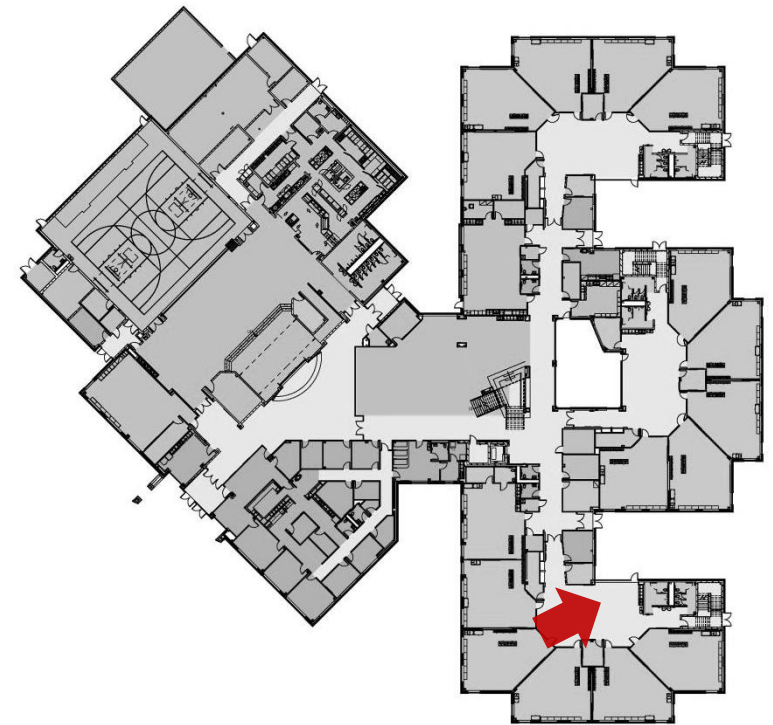


Clearwater



Neighborhood Activity Commons

Willow Lake

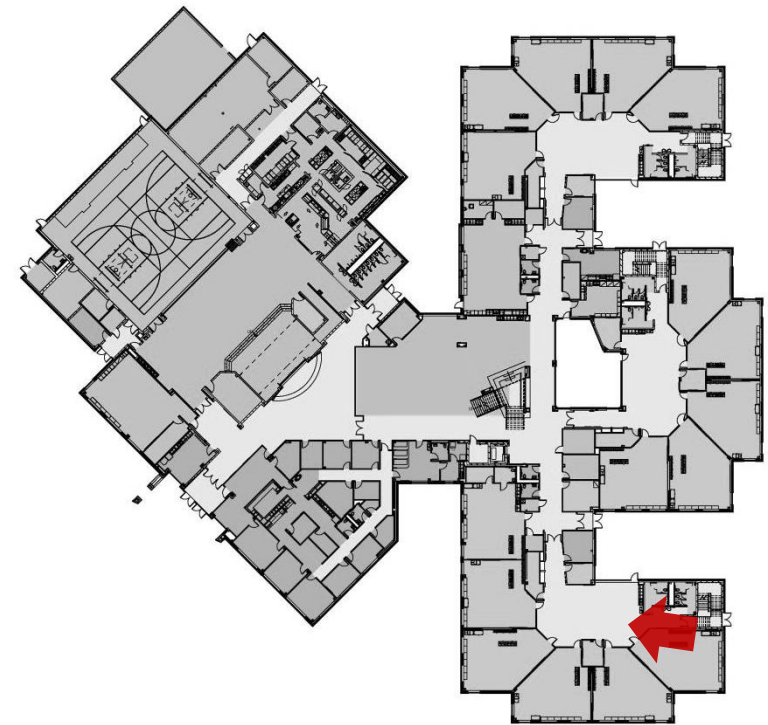


Clearwater



Neighborhood Activity Commons

Willow Lake

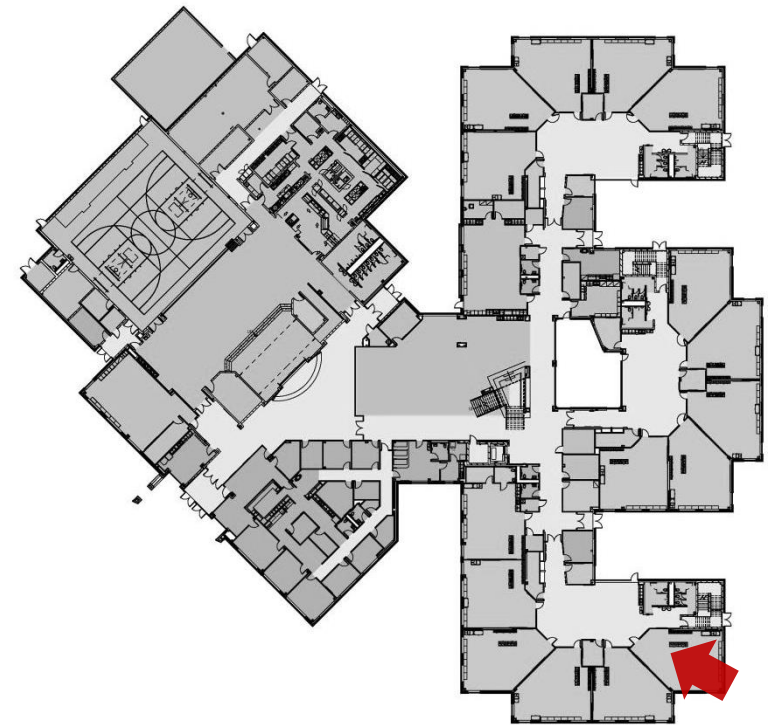


Clearwater



Learning Studio

Willow Lake

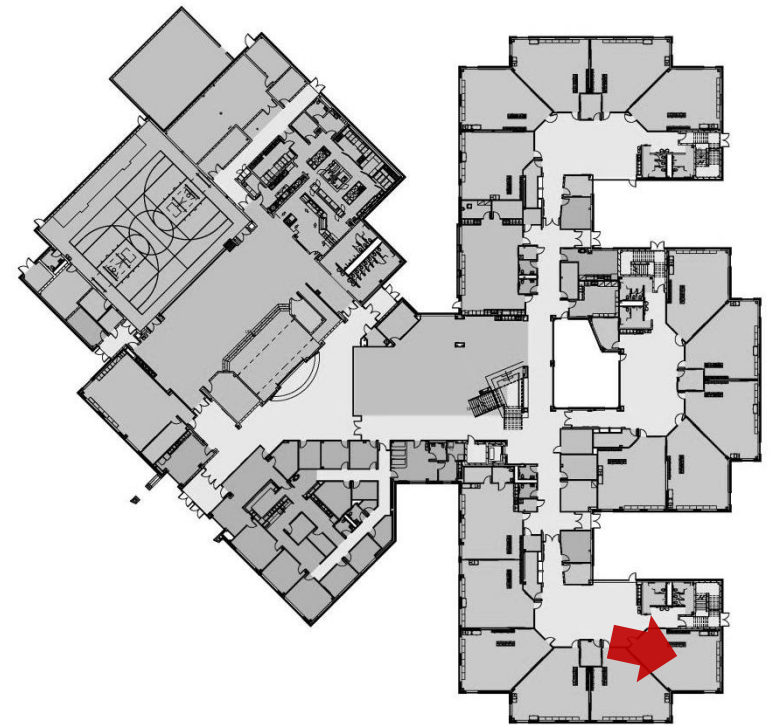


Clearwater



Learning Studio

Willow Lake

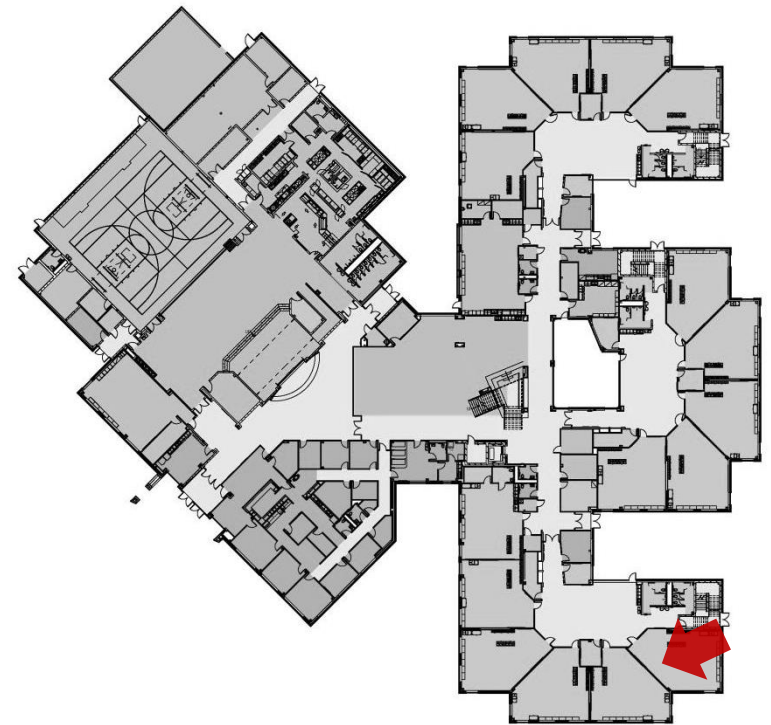


Clearwater



Learning Studio

Willow Lake

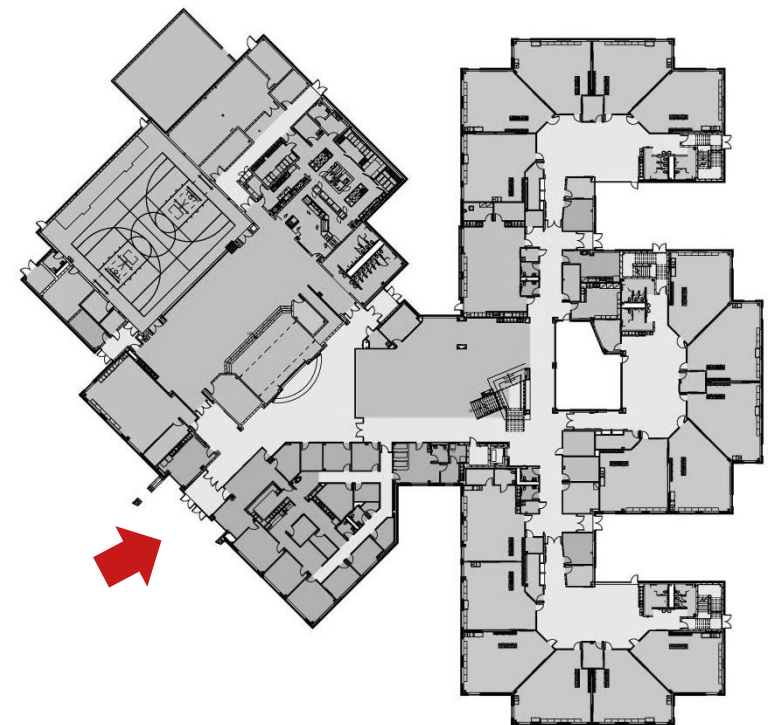


Clearwater



Exterior
Main Entrance

Willow Lake

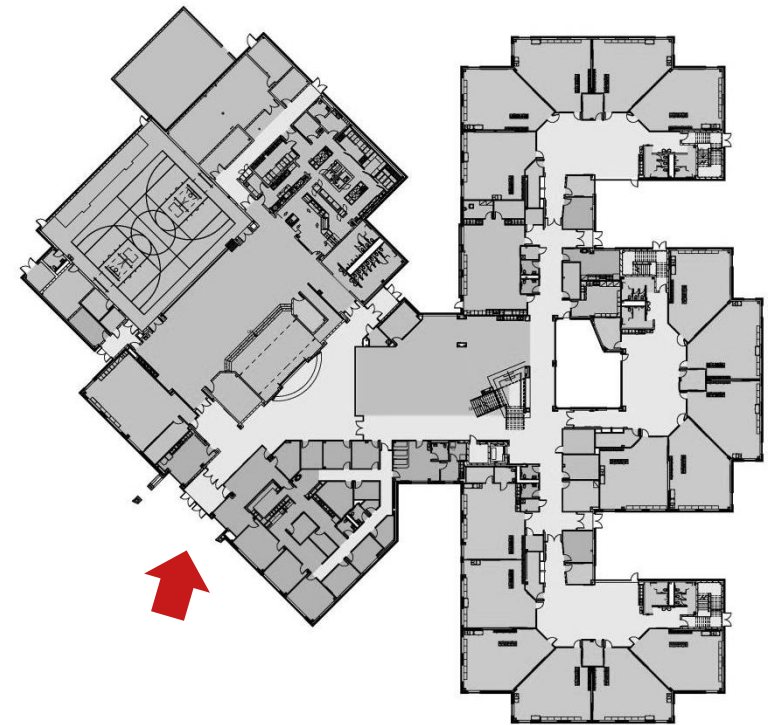


Clearwater



Exterior
Main Entrance

Willow Lake

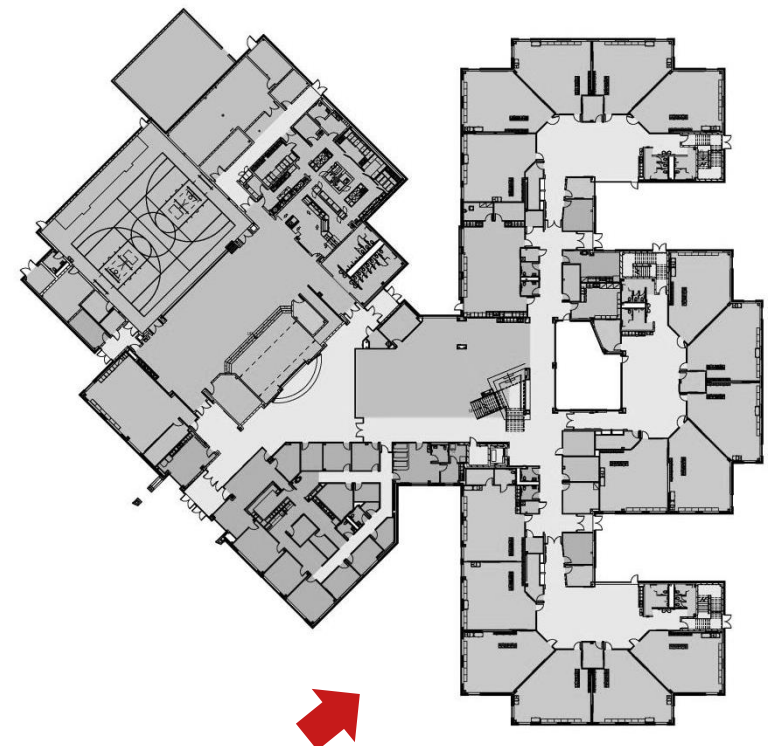


Clearwater



Exterior Neighborhood Wing

Willow Lake

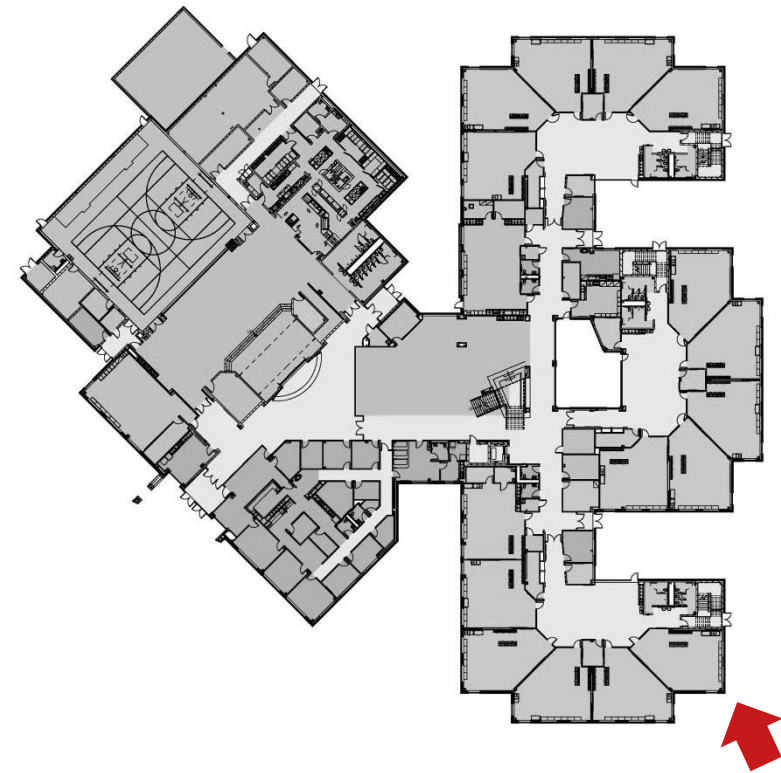


Clearwater



Exterior Neighborhood Entrances

Willow Lake

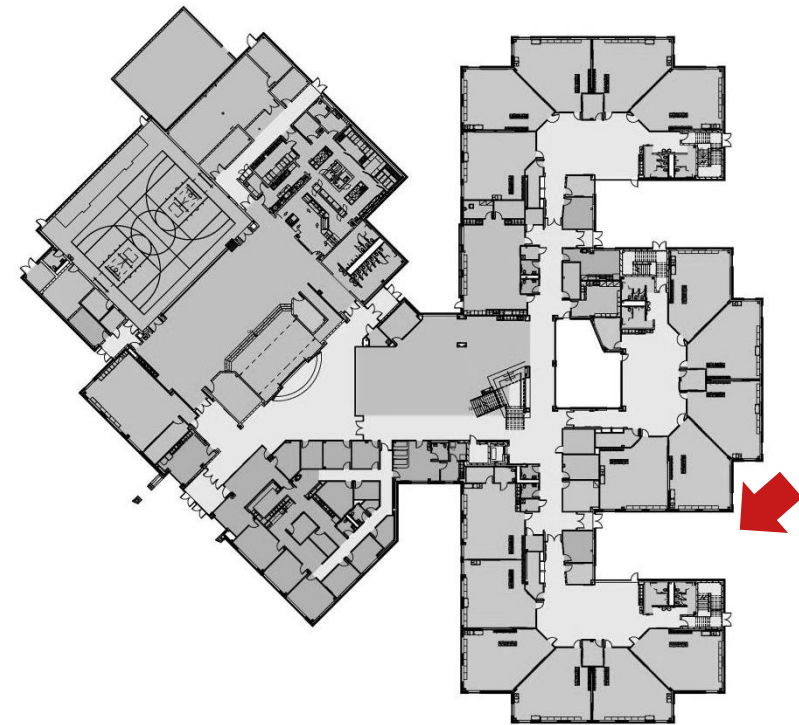


Clearwater



Exterior Neighborhood Entrances

Willow Lake

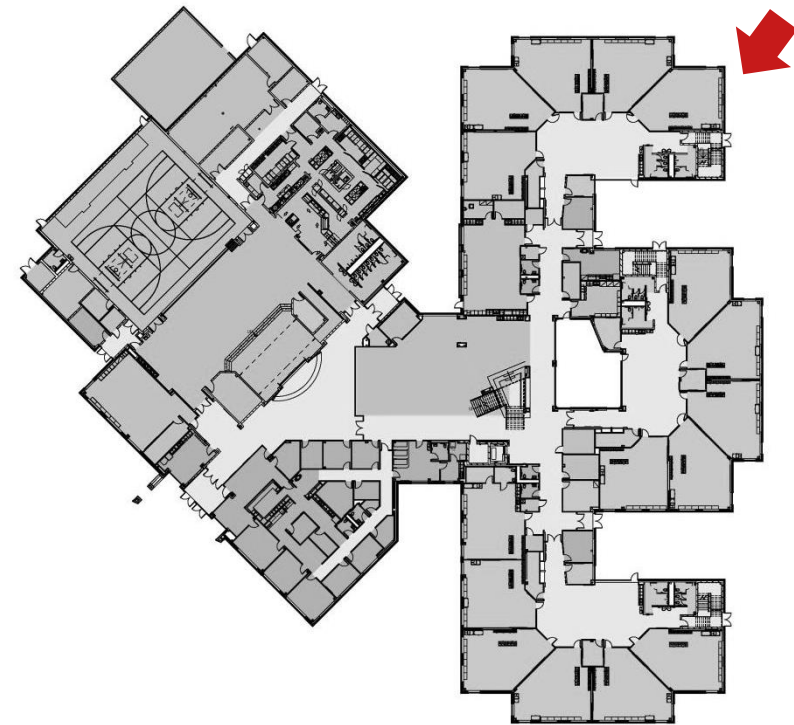


Clearwater



Exterior Neighborhood Entrances

Willow Lake

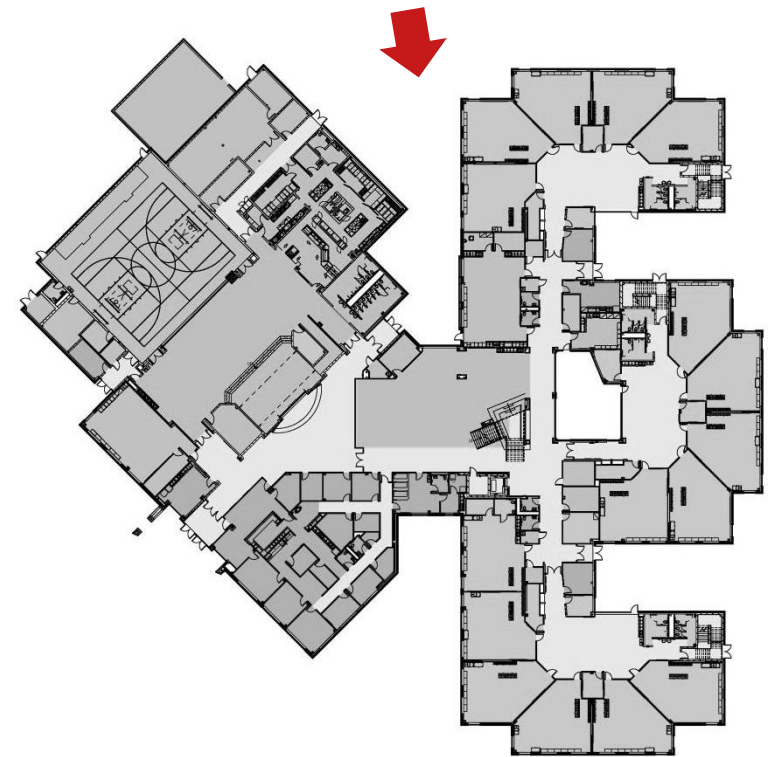


Clearwater



Exterior
Neighborhood
Wing

Willow Lake

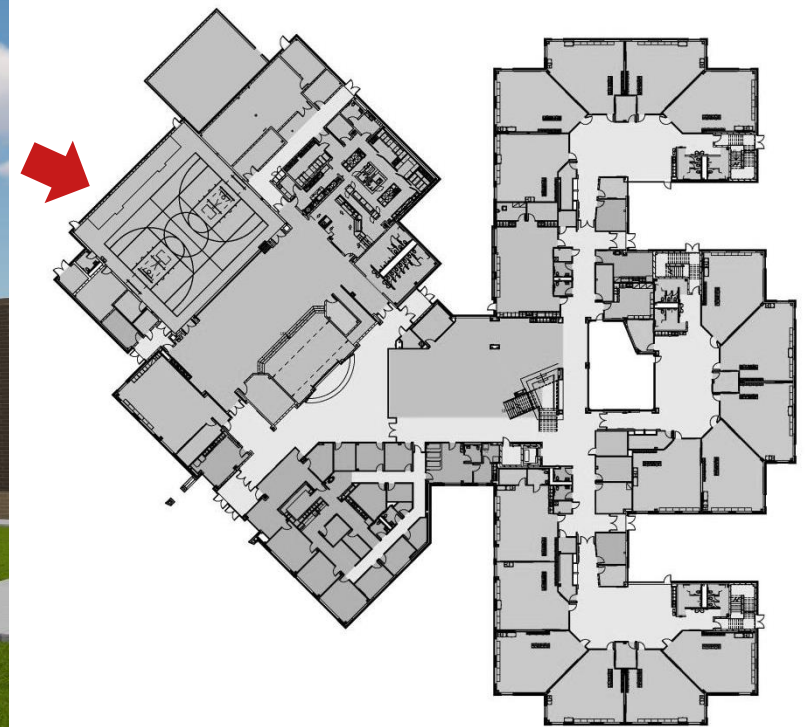


Clearwater



Exterior
Gymnasium

Willow Lake



Q & A

Clearwater Site Plan

Legend

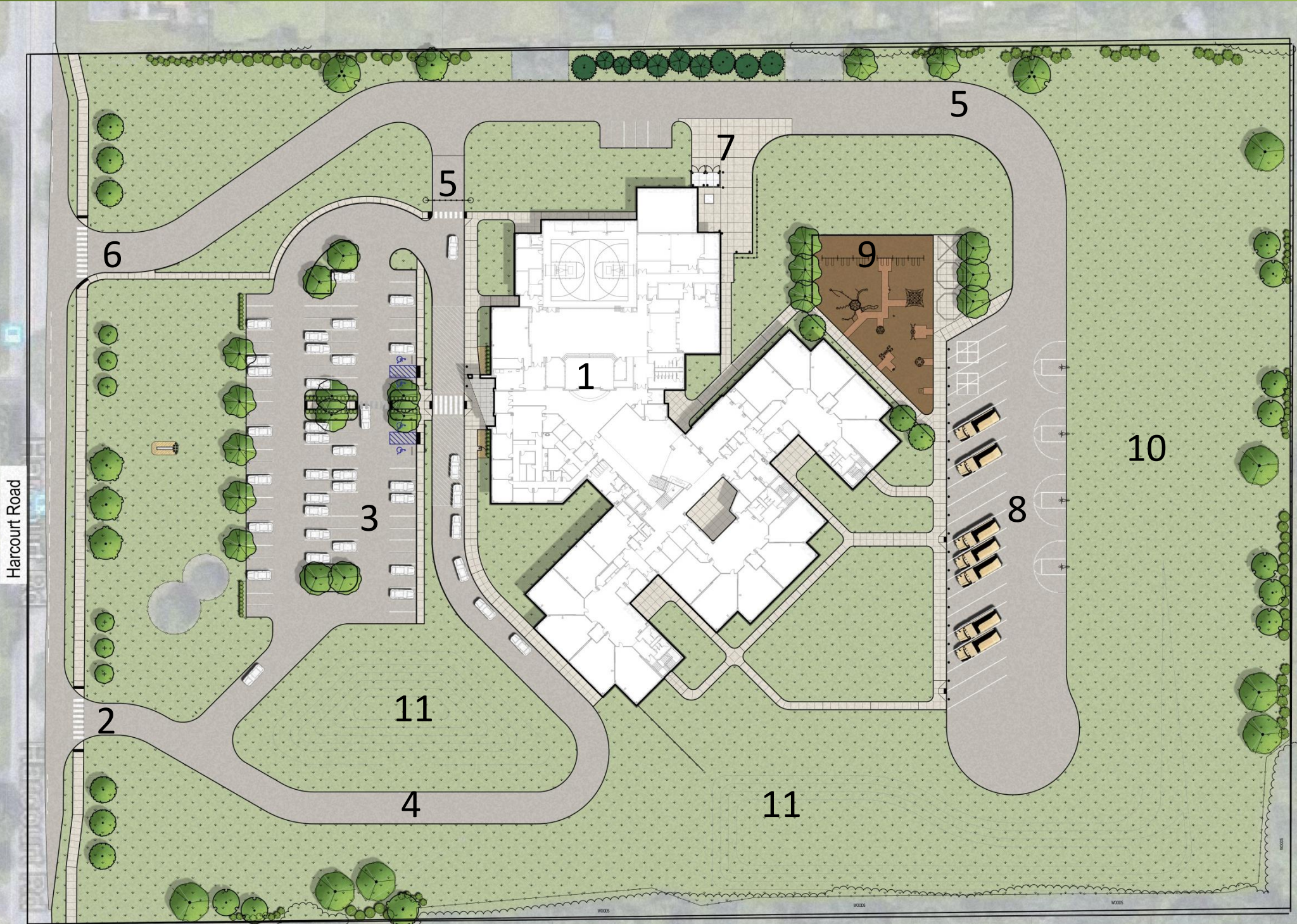
- 1. Building Footprint
- 2. Main Entrance / Exit Drive
- 3. Visitor and Staff Parking Lot
- 4. One Way Drop-off / Pick-up Drive
- 5. Gate at Drive
- 6. Service / Bus Drive Entrance
- 7. Service Entrance
- 8. Bus Lot / Hard Surface Play Area / Event Parking
- 9. Playground
- 10. Grass Play Area
- 11. Dry Detention Basin



Willow Lake Site Plan

Legend

- 1. Building Footprint
- 2. Main Entrance / Exit Drive
- 3. Visitor and Staff Parking Lot
- 4. One Way Drop-off / Pick-up Drive
- 5. Gate at Drive
- 6. Service / Bus Drive Entrance
- 7. Service Entrance
- 8. Bus Lot / Hard Surface Play Area / Event Parking
- 9. Playground
- 10. Grass Play Area
- 11. Dry Detention Basin



First Floor Plan – Clearwater & Willow Lake

Major Spaces

- 1. Neighborhood
- 2. Outdoor Learning Lab
- 3. Special Ed.
- 4. Secure Entrance
- 5. Admin./Clinic
- 6. Main Lobby
- 7. Discovery Center
- 8. Platform
- 9. Cafeteria
- 10. Kitchen
- 11. Gymnasium
- 12. Music
- 13. Art Room
- 14. Main Mechanical Room
- 15. Outdoor Mech. Yard



Second Floor Plan – Clearwater & Willow Lake

Major Spaces

- 1. Learner Neighborhood
- 2. World Language
- 3. Resource
- 4. Mech. Fan Room
- 5. Gymnasium below
- 6. Cafeteria Below
- 7. Discovery Center Below
- 8. Roof Below
- 9. Mechanical Penthouse

