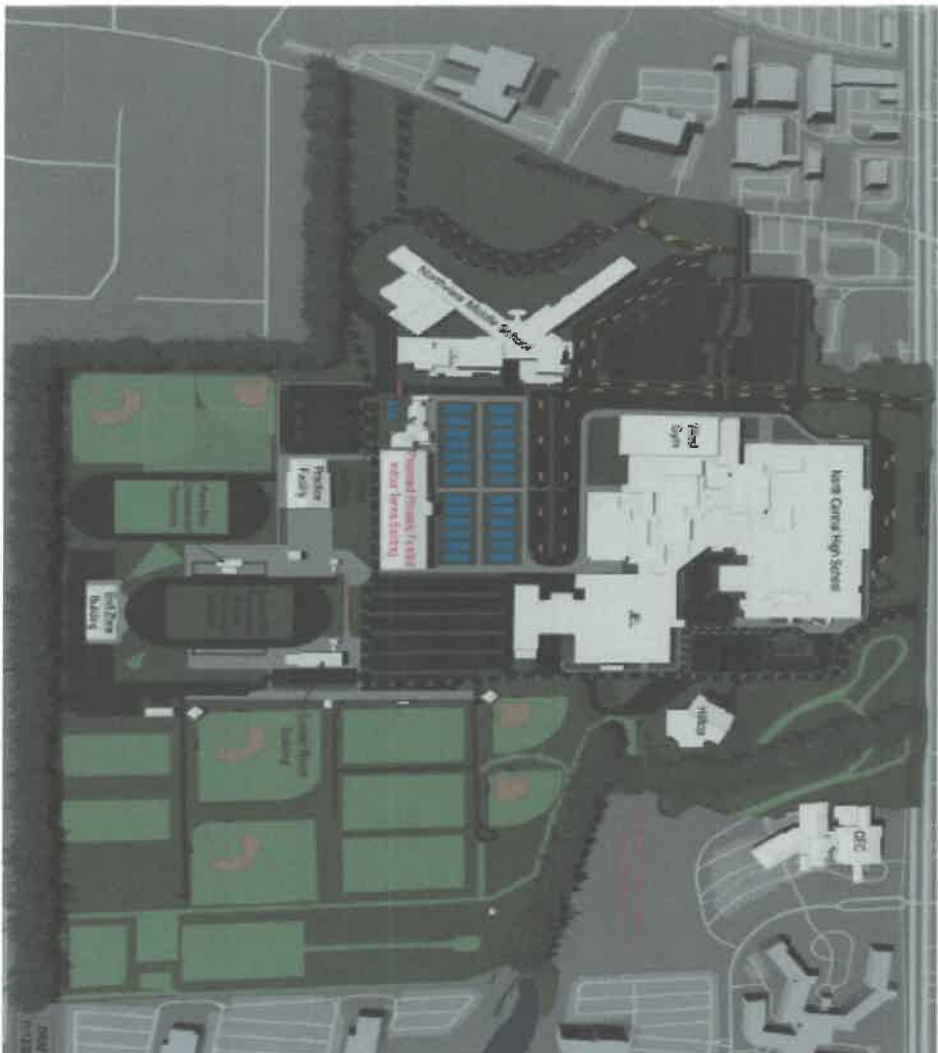


Alison  
Subbank  
Swift Wood Host

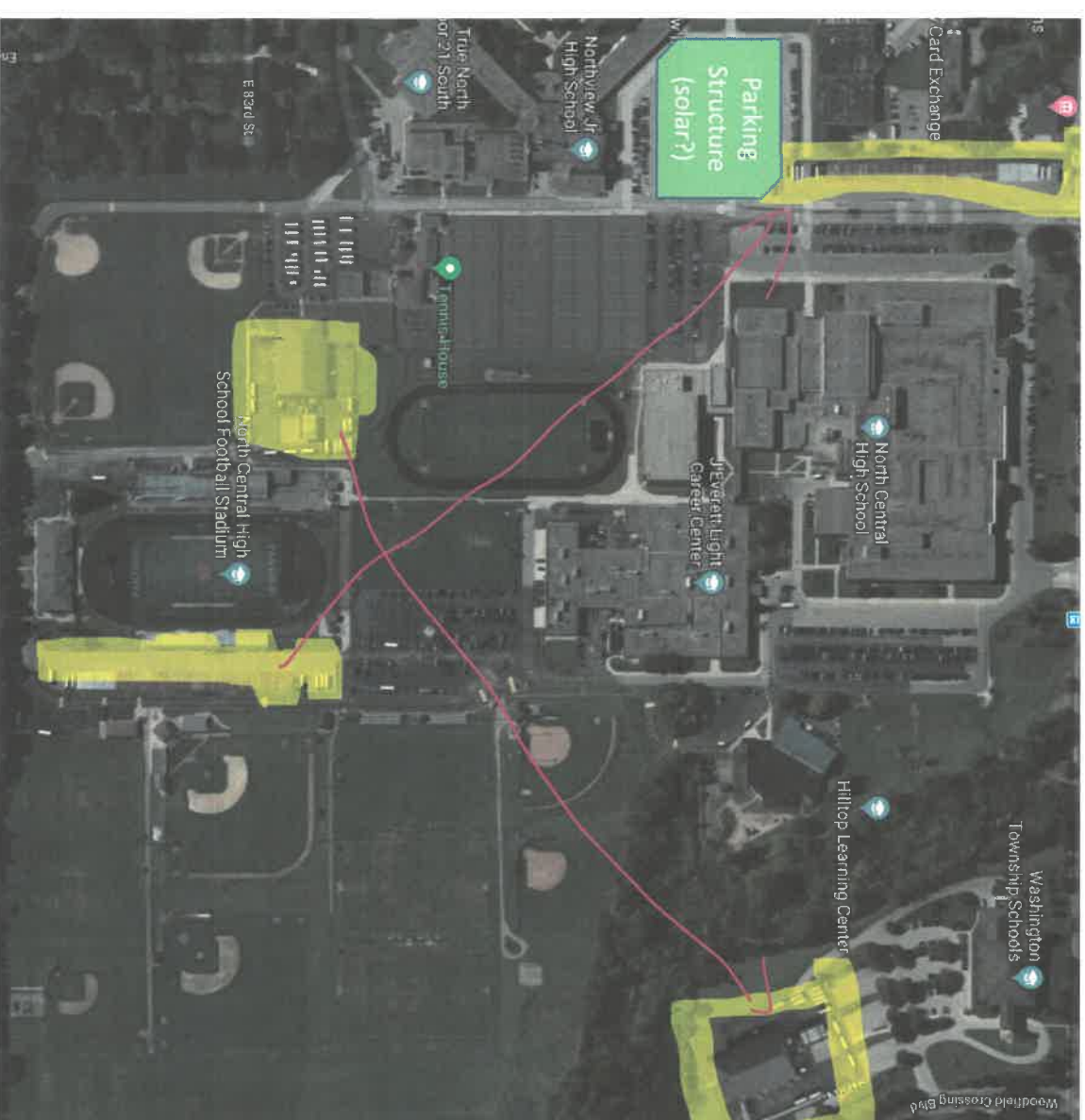
# Our Understanding The plan and goals

Beyond needed renovations to NC/JEL and other schools the top three are:

1. *Make room for expanded athletic facilities to be competitive with our rival schools*
2. *Enhance student safety at all schools by isolating bus and car traffic at peak times*
3. *More opportunities for Preschool and Adult Education*

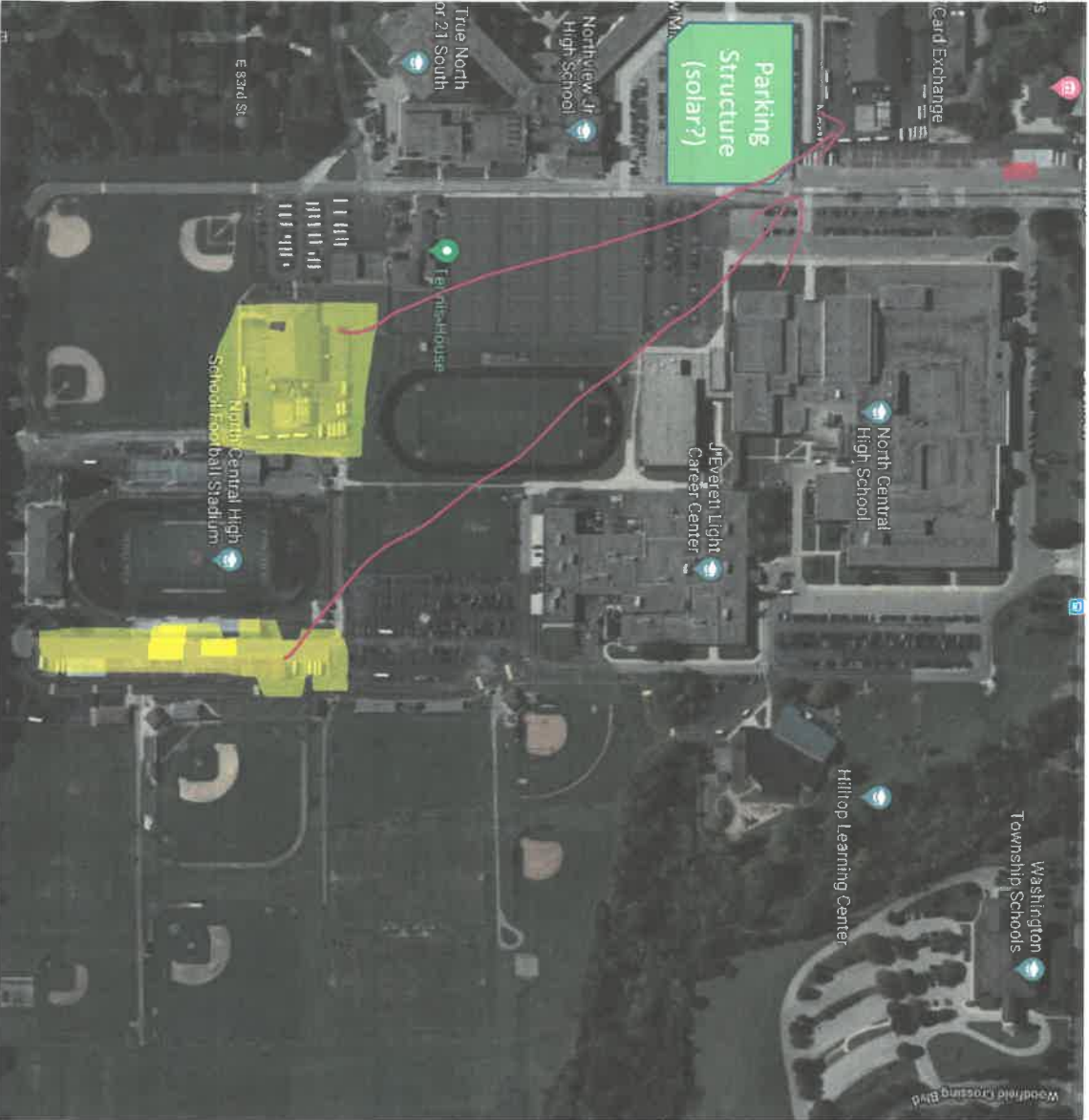


Transportation & Warehouse proposed to transition off NC Campus to improve safety and security and to allow for expanded student program spaces



## A better transportation option: Re-purpose main campus space 1

- **Move only NC/NV Buses and Transportation** to meet safety and athletic goals
- Complete work in process at Westlane and Eastwood and separate bus and car entrances
- Continue cost efficiency of decentral busses (100x10x180\* 25/mi = \$45K annually)
- No negative quality of life/property value impact to a neighborhood
- No loss of play space for communities
- Opportunity to partner with sports groups to enhance "feeder" opportunities @ 91st ST site (lacrosse, rugby and other field sports)
- Use The Barn Fronts for student murals, commission Alumni for Welcome Art facing 86th
- Use John Strange for preschool & Adult Ed or buy 8450 Westfield Ave (assessed @ 4.5M)
- Preserves greenspace & no new issues regarding storm water control & air quality
- Add garage behind NV for parking density
- Cost effective (<4M for Barn, <9M for Parking, <6M for Transport Bldg, <11M for 8450 – save 18M from 48M Proposal)
- Opportunity for grant funding with solar roofs



## A better transportation option: Re-purpose main campus space 2

- **Move only NC/NV Buses and Transportation** to meet safety and athletic goals
- Complete work in process at Westlane and Eastwood and separate bus and car entrances
- Continue cost efficiency of decentral busses (100x10x180\*.25/mi = \$45K annually)
- No negative quality of life/property value impact to a neighborhood
- No loss of play space for communities
- Opportunity to partner with sports groups to enhance "feeder" opportunities @ 91st ST site (lacrosse, rugby and other field sports)
- Use The Barn Fronts for student murals, commission Alumni for Welcome Art facing 86th
- Use John Strange for warehouse, preschool & Adult Ed or buy 8450 Westfield Ave (assessed @ 4.5M)
- Preserves greenspace & no new issues regarding storm water control & air quality
- Add garage behind NV for parking density
- Cost effective (<4M for Barn, <9M for Parking, <6M for Transport Bldg., <11M for JS/or 8450 – save 18M from 48M Proposal)
- Opportunity for grant funding with solar roofs



# 91<sup>st</sup> & College Community Collaboration Meeting

Feedback Exercise

## QUESTION

What are your thoughts about building a new Northview Middle School at 91st & College and repurposing the current NVMS and redesign of operations/transportation services on Central Campus to improve safety and relieve overcrowding on central campus?

---

## ANSWER

Thomas Bennett I love it.

Drainage for property concerns.

How much pavement will the new middle school have. Concerns for water drainage

Dynamo Soccer?





# 91<sup>st</sup> & College Community Collaboration Meeting

Feedback Exercise

## QUESTION

What are your thoughts about building a new Northview Middle School at 91st & College and repurposing the current NVMS and redesign of operations/transportation services on Central Campus to improve safety and relieve overcrowding on central campus?

---

## ANSWER

- ① EVIDENCE OF SAFETY CONCERNS,  
STILL NONE
- ② Repair of relationships & trust.
  - Seems no concern paid to negative impacts of SC @ 91<sup>st</sup> - College
  - EVEN RESPONSE TODAY WAS ALL "TRUST US" CONCERNS OUTWEIGHT Benefits
- ③ What happens to Dynano PC
- ④ w/out CONCEEDING NEED FOR THIS + RAISING TAXES, this Alt Plan seems a good direction

⊕ Concerns about traffic flow &  
SIDEWALKS, PEDESTRIAN, VERY  
IMPORTANT TO GO ABOVE MINIMUM

⊕ Will you continue to bus local kids  
to EASTWOOD/WESTLANE? seems  
some families are being sent pretty  
far out of neighborhood.

- Esp at 9<sup>th</sup> St, walk ways
- Access to TRAIL
- Widening Roadway
- Accommodating  
Red line turn around



# 91<sup>st</sup> & College Community Collaboration Meeting

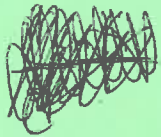
Feedback Exercise

Tony - Board member present at table.

## QUESTION

What are your thoughts about building a new Northview Middle School at 91st & College and repurposing the current NVMS and redesign of operations/transportation services on Central Campus to improve safety and relieve overcrowding on central campus?

## ANSWER



Better than the ops center proposed,

- Overall expense issues
- Use John Strange more effectively
- Use the existing campus more effectively
- Artificially constraining parameters

- Explored outsourcing bussing services (Miller or Durham?)

- Centralizing daily bus storage will increase bus operating costs

Ric Huffman  
↓ Dynamo FC 317-366-5303

Not specific to ops center v. school

- Programming for Washington Township youth soccer will deteriorate. Right now

Dynamo serves 500ish families. Displacing the organization without expressed commitments from the school district will force us out of the township. I am happy to discuss further and we would love to continue our partnership with the school district



# 91<sup>st</sup> & College Community Collaboration Meeting

Feedback Exercise

## QUESTION

What are your thoughts about building a new Northview Middle School at 91st & College and repurposing the current NVMS and redesign of operations/transportation services on Central Campus to improve safety and relieve overcrowding on central campus?

## ANSWER

- ① Swap Soccer Placement for football → visual obstruction for residences and noise from football more voracious than from soccer
- ② Which side of street (91st) would be widened to accommodate sidewalks? We prefer South side because it is lesser developed and would impact the least people/properties
- ③ Neighborhood use of property?
- ④ Drainage concerns still exist, but more confidence in positive resolution because of code for new construction.
- ⑤ Does it make sense to sell <sup>the 4</sup> other MSDWT properties in order to purchase a larger parcel of land that is suitable (large enough and well located) to reserve for future School district growth and so these safety + overcrowding issues do not ~~perpetuate~~ perpetuate into the future
- ⑥ Trust issues. MSDWT has not been entirely forthcoming





# 91<sup>st</sup> & College Community Collaboration Meeting

Feedback Exercise

## QUESTION

What are your thoughts about building a new Northview Middle School at 91st & College and repurposing the current NVMS and redesign of operations/transportation services on Central Campus to improve safety and relieve overcrowding on central campus?

---

## ANSWER

- Would like Demographic study to find growth of the district + student population.
- Concerns with Drainage + Flooding issues for areas around the site.
- How will it be paid for? <sup>Only 20% of</sup> People in Washington Township have students in Washington Township Schools. Why punish other 80% by raising taxes.
- What percentage of board members, superintendents, or anyone working on this project, live within a mile radius of either campus?
- Traffic flow problems w/ bldg. of a school in addition to drainage, etc.



# 91<sup>st</sup> & College Community Collaboration Meeting

Feedback Exercise

## QUESTION

What are your thoughts about building a new Northview Middle School at 91st & College and repurposing the current NVMS and redesign of operations/transportation services on Central Campus to improve safety and relieve overcrowding on central campus?

## ANSWER

- 1.) Why not Build A Bridge From Northview TO CEC CAMPUS
- 2.) A Positive You LISTENED TO COMMENTS FROM 1<sup>ST</sup> MEETING
- 3.) LIKE PROPOSED SCHOOL @ 91<sup>ST</sup> & COLLEGE DEPENDING ON COST. ~~IS~~ WILL IT BE LARGE ENOUGH TO HOUSE STUDENTS?
- \* 4.) WASHINGTON TWP. NEEDS TO HAVE AN AUDIT OF SPENDING - I GUARANTEE MILLIONS \$\$\$ COULD BE LET OUT OF ANNUAL BUDGET
- 5.) WHAT WOULD 91<sup>ST</sup> & COLLEGE ACTUALLY BE WORTH - COMMERCIAL REAL ESTATE?
- 6.) WHAT IS HAPPENING W/ JOHN STRANGE SCHOOL PROPERTY? MONEY IS IN THIS PROPERTY - SELL IT

7.) Like Keeping Buses on AC Campus

8.) Lack of trust makes public skeptical

9.)



# 91<sup>st</sup> & College Community Collaboration Meeting

Feedback Exercise

## QUESTION

What are your thoughts about building a new Northview Middle School at 91st & College and repurposing the current NVMS and redesign of operations/transportation services on Central Campus to improve safety and relieve overcrowding on central campus?

## ANSWER

- demographic studies - how many students at ~~at~~ each school how does that affect the plan, what is the future projections for student #s?
- What about consolidating to two middle schools - eastwood/westlane and leave 91<sup>st</sup> & college alone? Spend the money on expanding Westlane/Eastwood
- what energy ~~&~~ cost<sup>savings</sup> considerations are being used in the current/future designs and plans
- for the sake of residents what is the traffic impact at the new middle school @ 91<sup>st</sup> & college. What roadwork would need to be done (91<sup>st</sup> & college)
- what access to residents to amenities on the new school site? what would be the process to gain access?



- would there be open greenspace on site that could be available for walking dogs, pedestrian traffic. Could trails be provided?

~~\_\_\_\_\_~~

- a school is much ~~favorat~~ more favorable than a transportation facility



# 91<sup>st</sup> & College Community Collaboration Meeting

Feedback Exercise

## QUESTION

What are your thoughts about building a new Northview Middle School at 91st & College and repurposing the current NVMS and redesign of operations/transportation services on Central Campus to improve safety and relieve overcrowding on central campus?

ANSWER - Much Better Plan

- Concerned about 91st street Bus traffic
  - ↳ to narrow of a street
  - ↳ Expanded streets

- Keeping bus facility on Central Campus if Done Safely

- ? - How many trips do buses make each day (Physical Trips)?
- ↳ How will moving buses from Eastwood & Westlane add miles to the run?
  - ↳ Additional cost in Gas & Driver time?

- Indy 60 - Add route & decrease MSDWT routes?

- Dynamic - Concerns with Faculty site?
- Time frame for new build?
- Will the new design be Eco Friendly?
  - ↳ Capture water & reuse for watering Fields?