

Washington Township Schools

Capital Projects Master Plan Rollout



Indiana Construction Roundtable
January 21, 2021



2016 Referendum - \$185M

WORK BID: COMPLETE or IN PROGRESS

Elementary Schools

- 2016 New Willow Creek Elementary School - COMPLETE
- 2016 New Clearwater Elementary School - COMPLETE
- 2016 Scope at Allisonville Elementary School - COMPLETE
- 2016 Scope at Spring Mill Elementary School - IN PROGRESS
- 2016 Scope at Crooked Creek Elementary School - IN PROGRESS

Secondary Schools

- 2016 Scope at Eastwood Middle School - IN PROGRESS
- 2016 Scope at Westlane Middle School - IN PROGRESS



2020 Referendum - \$285M

Elementary Schools

- Fox Hill Elementary School Renovation
- Greenbriar Elementary School Renovation
- Nora Elementary School Renovation
- Additional Scope - Allisonville Elementary
- Additional Scope - Spring Mill Elementary
- Additional Scope - Crooked Creek Elementary

Secondary Schools

- North Central High School, Athletic Facilities & Centralized Bus Storage
- New Northview Middle School
- Hilltop Developmental PreSchool Addition & CEC
- JEL Career Center
- Operations Service Center (Existing NVMS)
- Additional Scope - Eastwood Middle School
- Additional Scope - Westlane Middle School



CAPITAL PROJECTS TEAM



Director of Operations

Angela Britain-Smith

abritain@msdwt.k12.in.us



Capital Projects Manager

Jim Boots

jboots@msdwt.k12.in.us



Capital Projects Administrative Assistant

Laura Guntz

lguntz@msdwt.k12.in.us



Project Manager

Marvin Murdock

mmurdock@msdwt.k12.in.us



Project Manager 1

In Progress

tdb@msdwt.k12.in.us



Project Manager 2

In Progress

tbd@msdwt.k12.in.us



Project Manager

Mark Wagner

mwaagner@msdwt.k12.in.us



Project Manager

Albie Hernandez

ahernandez@msdwt.k12.in.us



Project Manager

Robin Winston

robin@winstonterrell.com

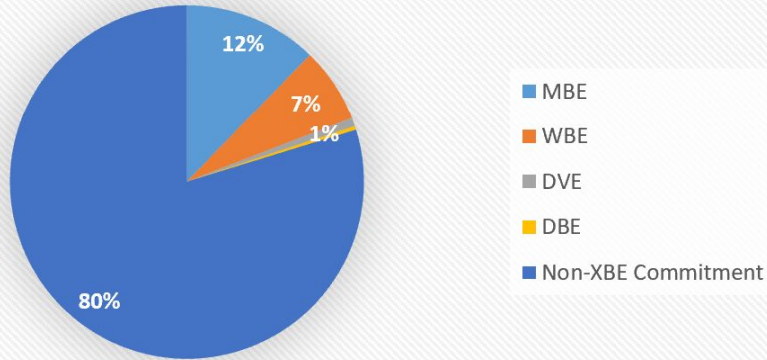


Supplier Diversity Update

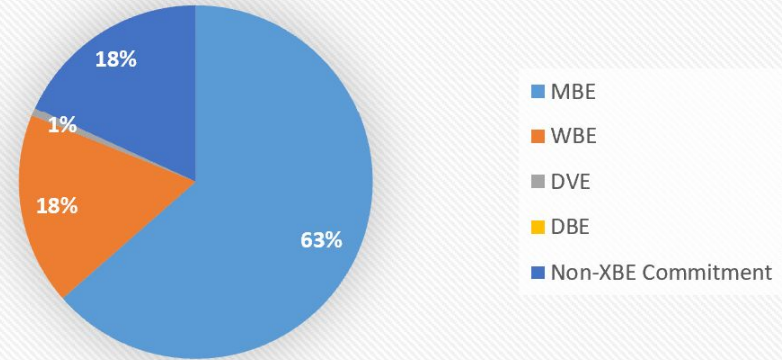


XBE Commitment Construction: \$28,892,700 (20%) of \$142,660,810.
XBE Commitment Professional Services: \$12,276,330 (82%) of \$14,999,841.

Total Diversity Participation
Commitment as of 01/01/2021



Professional Services Diversity
Commitment as of 01/01/2021





Supplier Diversity Update



msdwtvendorregistrationform.com



Vendor Registration Form

Thank you for your interest in doing business with the Metropolitan School District of Washington Township (MSDWT) and for submitting your related information via our Vendor Registration Portal. The locally-elected members of the MSDWT School Board and administrators from the District will conduct a series of reviews and make recommendations regarding firms to be selected by the District for Phase I of this multi-year project.

We encourage you to continue to visit the Vendor Relations Portal and the website of the MSDWT (www.msdwt.k12.in.us) for additional information about upcoming projects related to the Safety, Capacity, Efficiency, Technology, Renovation and Construction project.

Thank you.

Team - Design Professionals (Elementary)

CSO Architects

- 2016 and 2020 Referendum Scope
 - Allisonville, Crooked Creek and Spring Mill Elementary Schools
 - Fox Hill, Greenbriar and Nora Elementary Schools



Team - Design Professionals (Secondary)

Schmidt Associates

- 2016 Referendum Scope (Eastwood MS and Westlane MS)
- Remaining 2016 and 2020 Referendum Scope
 - North Central High School, Athletic Facilities & Centralized Bus Storage
 - New Northview Middle School
 - Hilltop Developmental PreSchool Addition and CEC
 - JEL Career Center
 - Operations Service Center (Existing NVMS)
 - Centralized Transportation Bus Storage
 - Eastwood Middle School
 - Westlane Middle School





Secondary Schools CMc Partners:

Contingent on School Board Approval

2020 & Additional 2016 Scope at Eastwood Middle School:



Powers & Sons Construction

Chris Kerns
ckerns@powersandsons.com
(317) 557-7918

New Northview Middle School:



Powers & Sons Construction with
Messer Construction



Chris Kerns
ckerns@powersandsons.com
(317) 557-7918

Daren Shoemaker
DShoemaker@messer.com
(317) 576-9250

2020 & Additional 2016 Scope at Westlane Middle School:



The Hagerman Group

Terry Greene
TGreene@Hagermangc.com
(317) 407-6559



Secondary Schools CMc Partners:

Contingent on School Board Approval

North Central High School, JEL Career Center, Transportation Center & Centralized Service Center:



The Skillman Corporation with

Victor Landfair
vdlandfair@skillman.com
(317) 850-5996



Davis & Associates

Gary Davis
gary@davisassocindy.com
(317) 263-9947

CEC/Hilltop Preschool:



Smoot Construction with

Adam Wilensky
awilensky@srsmoor.com
(317) 557-8958



The Carpenter's Son and



CORE Planning Strategies



Elementary Schools CMc Partners:

Contingent on School Board Approval

Allisonville, Crooked Creek & Spring Mill Elementary Schools:



Smoot Construction

Adam Wilensky
awilensky@srsmoor.com
(317) 557-8958

Greenbriar, Fox Hill & Nora Elementary Schools:



Shiel Sexton with

Harmon Construction and



Zurbach Consulting

Joe Shanahan
jshanahan@shielsexton.com
(317) 423-6047



| | 2017 | 2018 | | | | 2019 | | | | 2020 | | | | 2021 | | | | 2022 | | | | 2023 | | | | 2024 | | | | 2025 | | | | 2026 | | | | | | | | | | | | | | | | | | | |
|--|------------|--------|--------|--------|------------|--------|--------|--------|--------|--------|--------|--------|------------|-------------------|--------|--------|------------|--------|--------|--------|--------|--------|-------------------|--------|--------|--------|--------|--------|--------|--------|--------|------------|--------|------|--|--|--|--|--|--|--|--|--|--|--|--|--|--|--|--|--|--|--|
| | Qtr. 4 | Qtr. 1 | Qtr. 2 | Qtr. 3 | Qtr. 4 | Qtr. 1 | Qtr. 2 | Qtr. 3 | Qtr. 4 | Qtr. 1 | Qtr. 2 | Qtr. 3 | Qtr. 4 | Qtr. 1 | Qtr. 2 | Qtr. 3 | Qtr. 4 | Qtr. 1 | Qtr. 2 | Qtr. 3 | Qtr. 4 | Qtr. 1 | Qtr. 2 | Qtr. 3 | Qtr. 4 | Qtr. 1 | Qtr. 2 | Qtr. 3 | Qtr. 4 | Qtr. 1 | Qtr. 2 | Qtr. 3 | Qtr. 4 | | | | | | | | | | | | | | | | | | | | |
| Overall Construction Process (2017 - 2026) | | | | | | | | | | | | | | | | | | | | | | | | | | | | | | | | | | | | | | | | | | | | | | | | | | | | | |
| Overall Construction Period (2017-2019) | | | | | | | | | | | | | | | | | | | | | | | | | | | | | | | | | | | | | | | | | | | | | | | | | | | | | |
| Clearwater Elementary School | 2016 Scope | | | | | | | | | | | | | | | | | | | | | | | | | | | | | | | | | | | | | | | | | | | | | | | | | | | | |
| Willow Lake Elementary School | 2016 Scope | | | | | | | | | | | | | | | | | | | | | | | | | | | | | | | | | | | | | | | | | | | | | | | | | | | | |
| Overall Construction Period (2019-2022) | | | | | | | | | | | | | | | | | | | | | | | | | | | | | | | | | | | | | | | | | | | | | | | | | | | | | |
| Eastwood Middle School | | | | | 2016 Scope | | | | | | | | | | | | 2020 Scope | | | | | | | | | | | | | | | | | | | | | | | | | | | | | | | | | | | | |
| Allisonville Elementary School | | | | | 2016 Scope | | | | | | | | 2020 Scope | | | | | | | | | | | | | | | | | | | | | | | | | | | | | | | | | | | | | | | | |
| Westlane Middle School | | | | | 2016 Scope | | | | | | | | 2020 Scope | | | | | | | | | | | | | | | | | | | | | | | | | | | | | | | | | | | | | | | | |
| Crooked Creek Elementary School | | | | | 2016 Scope | | | | | | | | 2020 Scope | | | | | | | | | | | | | | | | | | | | | | | | | | | | | | | | | | | | | | | | |
| Spring Mill Elementary School | | | | | 2016 Scope | | | | | | | | 2020 Scope | | | | | | | | | | | | | | | | | | | | | | | | | | | | | | | | | | | | | | | | |
| Overall Construction Period (2021-2026) | | | | | | | | | | | | | | | | | | | | | | | | | | | | | | | | | | | | | | | | | | | | | | | | | | | | | |
| North Central High School | | | | | | | | | | | | | | 2016 & 2020 Scope | | | | | | | | | | | | | | | | | | | | | | | | | | | | | | | | | | | | | | | |
| New Northview Middle School | | | | | | | | | | | | | | 2016 & 2020 Scope | | | | | | | | | | | | | | | | | | | | | | | | | | | | | | | | | | | | | | | |
| Hilltop Preschool (CEC/Hilltop) | | | | | | | | | | | | | | 2016 & 2020 Scope | | | | | | | | | | | | | | | | | | | | | | | | | | | | | | | | | | | | | | | |
| Centralized Bus Storage | | | | | | | | | | | | | | 2020 Scope | | | | | | | | | | | | | | | | | | | | | | | | | | | | | | | | | | | | | | | |
| Greenbriar Elementary School | | | | | | | | | | | | | | 2016 & 2020 Scope | | | | | | | | | | | | | | | | | | | | | | | | | | | | | | | | | | | | | | | |
| Nora Elementary School | | | | | | | | | | | | | | 2016 & 2020 Scope | | | | | | | | | | | | | | | | | | | | | | | | | | | | | | | | | | | | | | | |
| Fox Hill Elementary School | | | | | | | | | | | | | | 2016 & 2020 Scope | | | | | | | | | | | | | | | | | | | | | | | | | | | | | | | | | | | | | | | |
| JEL Career Center | | | | | | | | | | | | | | | | | | | | | | | 2016 & 2020 Scope | | | | | | | | | | | | | | | | | | | | | | | | | | | | | | |
| Operations Service Center | | | | | | | | | | | | | | | | | | | | | | | | | | | | | | | | 2020 Scope | | | | | | | | | | | | | | | | | | | | | |

Design Phase Progress

Allisonville, Crooked Creek, Spring Mill Elementary Schools



| | 2020 | | 2021 | | | | | | | | | | 2022 | | | | 2023 | | | | 2024 | | | | |
|--|------|-----|------|-----|-----|-----|-----|-----|--------------|-----|-----|-----|------|-----|--------|--------|--------|--------|--------|--------|--------|--------|--------|--------|--------|
| | Nov | Dec | Jan | Feb | Mar | Apr | May | Jun | Jul | Aug | Sep | Oct | Nov | Dec | Qrt. 1 | Qrt. 2 | Qrt. 3 | Qrt. 4 | Qrt. 1 | Qrt. 2 | Qrt. 3 | Qrt. 4 | Qrt. 1 | Qrt. 2 | Qrt. 3 |
| 11b Allisonville 11b - Final Design 11b - Construction Documents 11b - Construction | ES | DD | ES | | CD | | | BID | CONSTRUCTION | | | | | | | | | | | | | | | | |
| 11b Crooked Creek 11b - Final Design 11b - Construction Documents 11b - Construction | ES | DD | ES | | CD | | | BID | CONSTRUCTION | | | | | | | | | | | | | | | | |
| 11b Spring Mill 11b - Final Design 11b - Construction Documents 11b - Construction | ES | DD | ES | | CD | | | BID | CONSTRUCTION | | | | | | | | | | | | | | | | |

Project Scope Highlights:

- Allisonville Elementary (July 2018-June 2022) is complete for 2016 scope. 2020 scope is in design and includes additional work on bus circulation and parking, 2-classroom addition, kitchen renovation, and casework replacement in classrooms.
- Crooked Creek Elementary (September 2018-June 2022) is under construction for 2016 scope. 2020 scope is in design and includes completion of playground, EIFS overbuild, complete re-roof, kitchen renovation and casework replacement in 4 classrooms.
- Spring Mill Elementary (October 2018-June 2022) is under construction for 2016 scope. 2020 scope is in design and includes partial re-roof, kitchen renovation, and casework replacement in classrooms.



Forecasted Progress for Next Months:

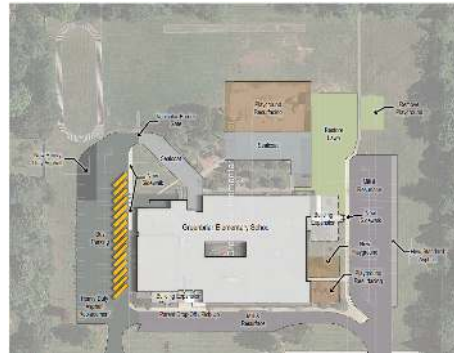
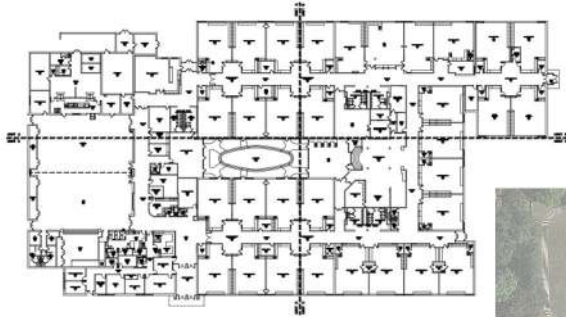
- Complete design and begin construction documents.
- Confirm construction cost and scope balance.
- Conduct bi-weekly Elementary Leadership Meetings
- Conduct bi-weekly design team meetings
- Meet with building level staff to review and finalize design
- Begin Design Development and finalize
- Incorporate expanded 2020 construction scope into construction contracts.
- **Bidding May 2021**

Design Phase Progress

Greenbriar Elementary



| | | 2020 | | 2021 | | | | | | | | | | 2022 | | | | 2023 | | | | 2024 | | | | | |
|----------------|------------------------------|------|-----|------|-----|-----|-----|-----|-----|-----|-----|-----|-----|------|-----|--------|--------|--------|--------|--------|--------|--------|--------|--------|--------|--------|--------|
| | | Nov | Dec | Jan | Feb | Mar | Apr | May | Jun | Jul | Aug | Sep | Oct | Nov | Dec | Qrt. 1 | Qrt. 2 | Qrt. 3 | Qrt. 4 | Qrt. 1 | Qrt. 2 | Qrt. 3 | Qrt. 4 | Qrt. 1 | Qrt. 2 | Qrt. 3 | Qrt. 4 |
| III Greenbriar | III - Final Design | | | | | | | | | | | | | | | | | | | | | | | | | | |
| | III - Construction Documents | | | | | | | | | | | | | | | | | | | | | | | | | | |
| | III - Construction | | | | | | | | | | | | | | | | | | | | | | | | | | |
| | | | | | | | | | | | | | | | | | | | | | | | | | | | |
| III Nora | III - Final Design | | | | | | | | | | | | | | | | | | | | | | | | | | |
| | III - Construction Documents | | | | | | | | | | | | | | | | | | | | | | | | | | |
| | III - Construction | | | | | | | | | | | | | | | | | | | | | | | | | | |
| | | | | | | | | | | | | | | | | | | | | | | | | | | | |
| III Fox Hill | III - Final Design | | | | | | | | | | | | | | | | | | | | | | | | | | |
| | III - Construction Documents | | | | | | | | | | | | | | | | | | | | | | | | | | |
| | III - Construction | | | | | | | | | | | | | | | | | | | | | | | | | | |
| | | | | | | | | | | | | | | | | | | | | | | | | | | | |



Project Scope Highlights

- Site circulation reconfiguration to better separate buses and cars and increase stacking length for parent drop-off/pick-up
- Pavement milling and resurfacing
- Playground equipment upgrades to replace old and address ADA accessibility
- 4-Classroom Addition
- Office addition with secure vestibule at main entrance
- Full re-roof of existing building
- Full interior finishes refurbishment
- Restroom renovations
- Kitchen renovation
- MEP systems upgrades
- LED lighting replacement

Forecasted Progress for Next Months:

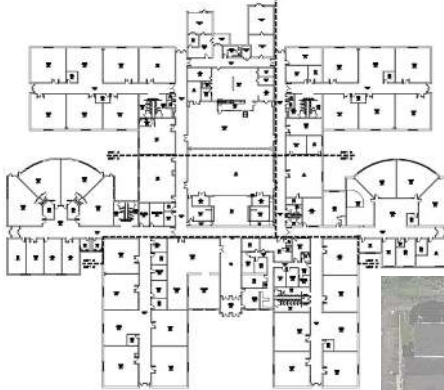
- Confirm referendum cost validation by construction manager
- Conduct bi-weekly Elementary Leadership Meetings
- Conduct bi-weekly Design Team Meetings
- Meet with building level staff to review and finalize design
- Complete Design Development
- Develop Construction Documents
- **Bidding in September/October 2021**

Design Phase Progress

Nora Elementary



| | 2020 | | | | 2021 | | | | 2022 | | | | 2023 | | | | 2024 | | | |
|------------------------------|------|-----|-----|-----|------|-----|-----|-----|------|-----|-----|-----|------|-----|----|----|------|----|----|----|
| | Nov | Dec | Jan | Feb | Mar | Apr | May | Jun | Jul | Aug | Sep | Oct | Nov | Dec | Q1 | Q2 | Q3 | Q4 | Q1 | Q2 |
| III Greenbriar | | | | | | | | | | | | | | | | | | | | |
| III - Final Design | | | | | | | | | | | | | | | | | | | | |
| III - Construction Documents | | | | | | | | | | | | | | | | | | | | |
| III - Construction | | | | | | | | | | | | | | | | | | | | |
| III Nora | | | | | | | | | | | | | | | | | | | | |
| III - Final Design | | | | | | | | | | | | | | | | | | | | |
| III - Construction Documents | | | | | | | | | | | | | | | | | | | | |
| III - Construction | | | | | | | | | | | | | | | | | | | | |
| III Fox Hill | | | | | | | | | | | | | | | | | | | | |
| III - Final Design | | | | | | | | | | | | | | | | | | | | |
| III - Construction Documents | | | | | | | | | | | | | | | | | | | | |
| III - Construction | | | | | | | | | | | | | | | | | | | | |



Project Scope Highlights

- Site circulation reconfiguration to better separate buses and cars and increase stacking length of parent drop-off/pick-up
- Pavement milling and resurfacing
- Address site drainage adjacent to southwest wing
- Playground equipment upgrades to replace old and address ADA accessibility
- Secure vestibule at main entrance with small addition
- Relocate media center to create grade-level pod
- Full interior finishes refurbishment
- Renovate grade-level areas to enhance the educational specifications goal of establishing neighborhoods
- Kitchen renovation
- Renovate restrooms
- Ramp to stage for ADA accessibility
- MEP systems upgrades
- LED lighting replacement

Forecasted Progress for Next Months:

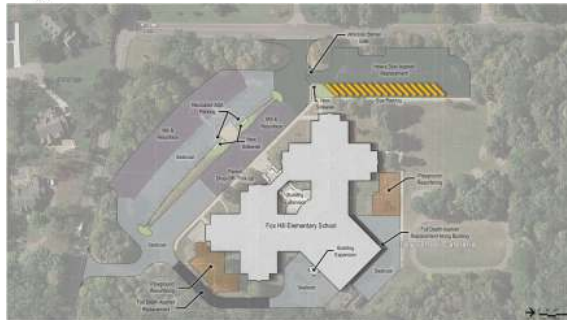
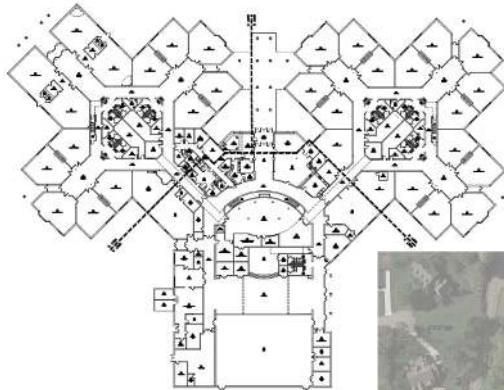
- Confirm referendum cost validation by construction manager
- Conduct bi-weekly Elementary Leadership Meetings
- Conduct bi-weekly Design Team Meetings
- Meet with building level staff to review and finalize design
- Begin Design Development in May 2021
- **Bidding January 2022**

Design Phase Progress

Fox Hill Elementary



| | 2020 | | 2021 | | | | | | | | 2022 | | | | 2023 | | | | 2024 | | | |
|------------------------------|------|-----|------|-----|-----|-----|-----|-----|-----|-----|------|-----|-----|-----|--------|--------|--------|--------|--------|--------|--------|--------|
| | Nov | Dec | Jan | Feb | Mar | Apr | May | Jun | Jul | Aug | Sep | Oct | Nov | Dec | Qrt. 1 | Qrt. 2 | Qrt. 3 | Qrt. 4 | Qrt. 1 | Qrt. 2 | Qrt. 3 | Qrt. 4 |
| III Greenbriar | | | | | | | | | | | | | | | | | | | | | | |
| III - Final Design | | | | | | | | | | | | | | | | | | | | | | |
| III - Construction Documents | | | | | | | | | | | | | | | | | | | | | | |
| III - Construction | | | | | | | | | | | | | | | | | | | | | | |
| III Nora | | | | | | | | | | | | | | | | | | | | | | |
| III - Final Design | | | | | | | | | | | | | | | | | | | | | | |
| III - Construction Documents | | | | | | | | | | | | | | | | | | | | | | |
| III - Construction | | | | | | | | | | | | | | | | | | | | | | |
| III Fox Hill | | | | | | | | | | | | | | | | | | | | | | |
| III - Final Design | | | | | | | | | | | | | | | | | | | | | | |
| III - Construction Documents | | | | | | | | | | | | | | | | | | | | | | |
| III - Construction | | | | | | | | | | | | | | | | | | | | | | |



Project Scope Highlights

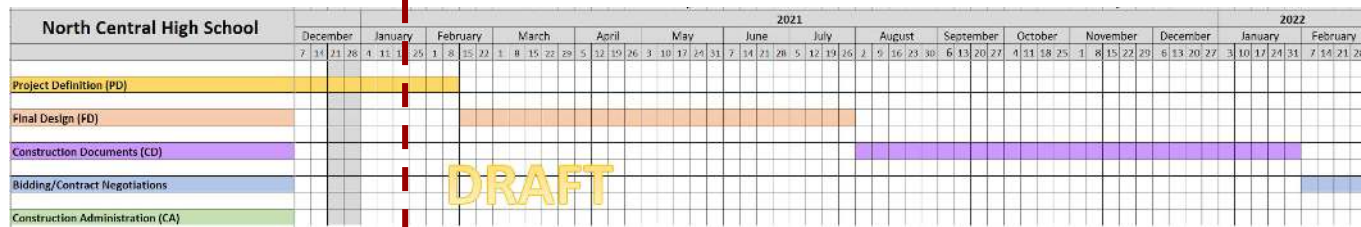
- Site circulation reconfiguration to better separate buses and cars and increase stacking length of parent drop-off/pick-up
- Pavement milling and resurfacing
- Playground equipment upgrades to replace old and address ADA accessibility
- Secure vestibule at main entrance with small addition
- Full re-roof of existing building
- Full interior finishes refurbishment
- Renovate grade-level pods to enhance the educational specifications goal of establishing neighborhoods
- Kitchen renovation
- Rework restroom core areas at pods to create separate restrooms oriented toward each grade-level neighborhood
- MEP systems upgrades
- LED lighting replacement

Forecasted Progress for Next Months:

- Confirm referendum cost validation by construction manager
- Conduct bi-weekly Elementary Leadership Meetings
- Conduct bi-weekly Design Team Meetings
- Meet with building level staff to review and finalize design
- Begin Design Development in September 2021
- **Bidding May 2022**

Design Phase Progress

North Central High School & JEL



Project Scope Highlights:

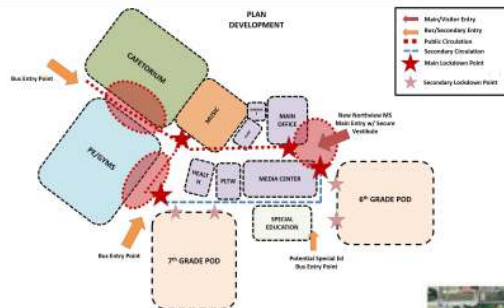
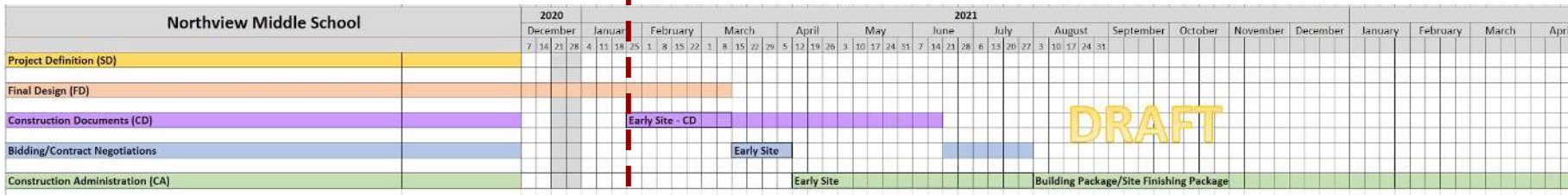
- Overall Campus Site Circulation and parking rework
- Athletic Fields and Stadium renovations
- Relocate HS Secure Entry for visitors & administration renovations
- Overall Classroom Renovations
- Cafeteria & Kitchen Renovations
- Performing Arts & Auditorium Renovations
- New West Gym Addition with classrooms & wrestling room
- Locker Room Renovations
- New Corridor Connection to JEL
- Central Plant (Mechanical) Renovation & overall HVAC Renovations
- Lighting & Electrical Renovations
- Security Upgrades
- Overall technology improvements
- Furniture and equipment upgrades

Forecasted Progress for Next Months:

- Mid-Feb. 2021: Finish Project Definition
- Spring 2021: Bid early Central Plant Package
- February 2022: Bid Overall Scope for Construction

Design Phase Progress

“New” Northview Middle School



New Northview Middle School to be constructed at 91st & College

Project Scope Highlights:

- New 1050 student Middle School - approximately 210,000 sf
- Overall Site development for separation of car and bus traffic on site
- Athletic fields to be equitable to existing Eastwood & Westlane Middle Schools
- Secure Entry at Main Administration
- 6th, 7th & 8th grade classroom pods
- Media Center with makerspace & access for community
- Band, Choir, Orchestra Spaces
- Cafetorium and Kitchen
- Gymnasium & Locker spaces

Forecasted Progress for Next Months:

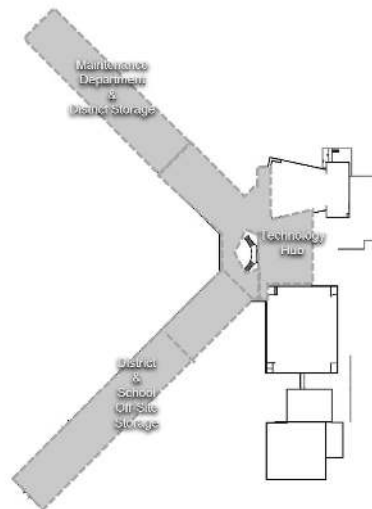
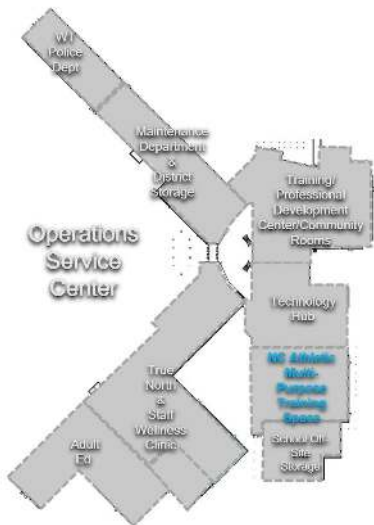
- Mid-March 2021: Finish Final Design
- Mid-March 2021: Potentially Bid early site package
- Mid-June 2021: Potentially Bid Overall Scope for Construction

Design Phase Progress

Centralized Service Center



| | 2017 | 2018 | | | | 2019 | | | | 2020 | | | | 2021 | | | | 2022 | | | | 2023 | | | | 2024 | | | | 2025 | | | | 2026 | | | | |
|-----------------------------|--------|--------|--------|--------|--------|--------|--------|--------|--------|--------|--------|--------|--------|-------------------|--------|--------|--------|--------|--------|--------|--------|--------|--------|--------|--------|--------|--------|--------|--------|--------|--------|--------|------------|------|--|--|--|--|
| | Qtr. 4 | Qtr. 1 | Qtr. 2 | Qtr. 3 | Qtr. 4 | Qtr. 1 | Qtr. 2 | Qtr. 3 | Qtr. 4 | Qtr. 1 | Qtr. 2 | Qtr. 3 | Qtr. 4 | Qtr. 1 | Qtr. 2 | Qtr. 3 | Qtr. 4 | Qtr. 1 | Qtr. 2 | Qtr. 3 | Qtr. 4 | Qtr. 1 | Qtr. 2 | Qtr. 3 | Qtr. 4 | Qtr. 1 | Qtr. 2 | Qtr. 3 | Qtr. 4 | Qtr. 1 | Qtr. 2 | Qtr. 3 | Qtr. 4 | | | | | |
| North Central High School | | | | | | | | | | | | | | 2016 & 2020 Scope | | | | | | | | | | | | | | | | | | | | | | | | |
| New Northview Middle School | | | | | | | | | | | | | | 2016 & 2020 Scope | | | | | | | | | | | | | | | | | | | | | | | | |
| Operations Service Center | | | | | | | | | | | | | | | | | | | | | | | | | | | | | | | | | 2020 Scope | | | | | |



Project Scope Highlights:

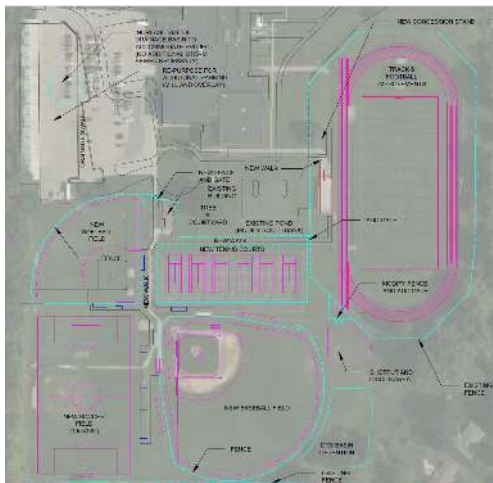
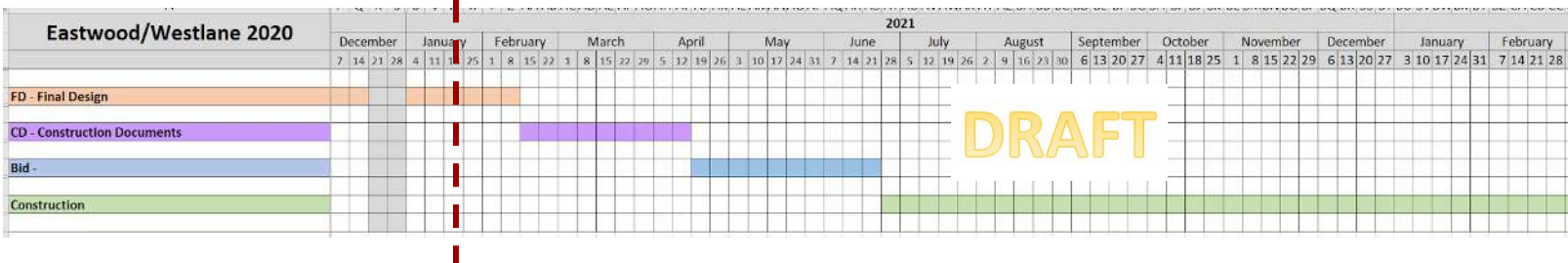
Renovations to existing Northview Building into Centralized Service Center

- New location for District Consolidated Technology, Maintenance & Police Offices/Training
- New location for District Warehouse Storage & Distribution
- Expansion of Alternative Programs currently in building
- Renovation for indoor athletic practice

Forecasted Progress:

- **Spring 2025:** Bid Overall Building Scope for Construction

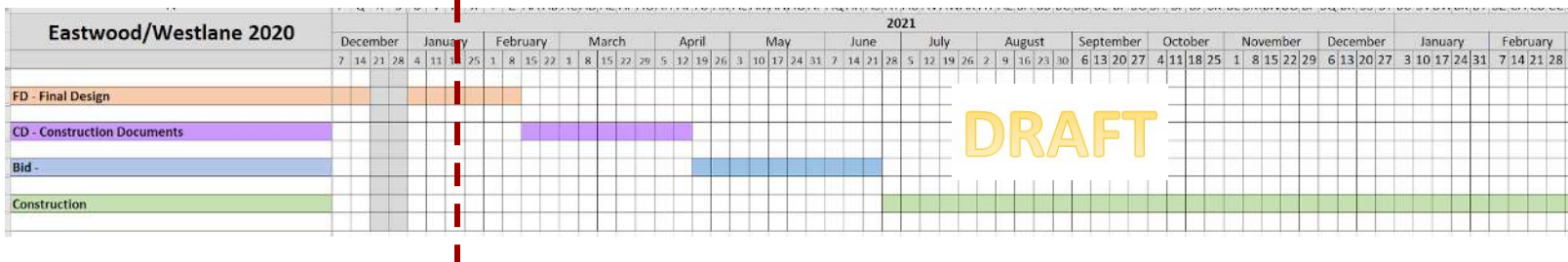
Eastwood Middle School



- Renovations to PE Spaces such as Gymnasiums & Locker Rooms
- Additional Casework & Acoustical Treatment Upgrades
- Additional HVAC Upgrades (Kitchen & Gyms)
- Athletic Site Renovations
- New Concession/Storage Building
- Demolition of existing Bus Barn
- Furniture & Equipment Upgrades
- Technology Upgrades

- Mid-Feb 2021: Finish Final Design
- **Mid-April 2021: Bid Overall Scope for Construction**

Westlane Middle School



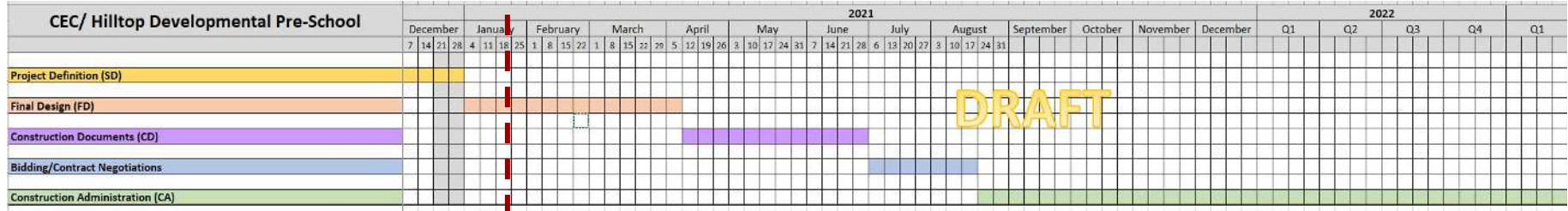
- Renovations to PE Spaces such as Gymnasiums, Locker Rooms & Fitness Room
- Renovations to Music Classrooms
- Additional Casework & Acoustical Treatment Upgrades
- Additional HVAC Upgrades (Kitchen & Gyms)
- Athletic Site Renovations
- New Concession/Storage Building
- Demolition of existing Bus Barn
- Furniture & Equipment Upgrades
- Technology Upgrades

Forecasted Progress for Next Months:

- Mid-Feb 2021: Finish Final Design
- **Mid-April 2021: Bid Overall Scope for Construction**

Design Phase Progress

CEC and Hilltop Preschool



Project Scope Highlights:

- New Developmental Preschool Facility attached to CEC - To include Preschool Classrooms, secure entry & administration, multipurpose/cafeteria space.
- Parking and drive expansion for Preschool
- New Preschool Playground
- Upgrade secure entry into CEC
- Interior Finish renovations at CEC
- HVAC renovations at CEC
- Lighting renovations at CEC
- Upgrade furniture & equipment at Preschool and CEC
- Additional Technology upgrades at CEC

Forecasted Progress for Next Months:

- Mid-April 2021: Finish Final Design
- Mid-July 2021: Bid Overall Scope for Construction

Staying Informed...



★ **MSDWT District Website:** <https://www.msdwt.k12.in.us/future-planning/>



- Project Schedules posted on MSDWT District Website
- Project Specific School Blogs
- School Board Meeting Construction Progress Updates
- Open Mic with MSD of Washington Township
- Vendor Registration with Winston Terrell Group
- Connect with Construction Manager Contacts
- Drone videos of projects

Q&A

