

New Northview Middle School

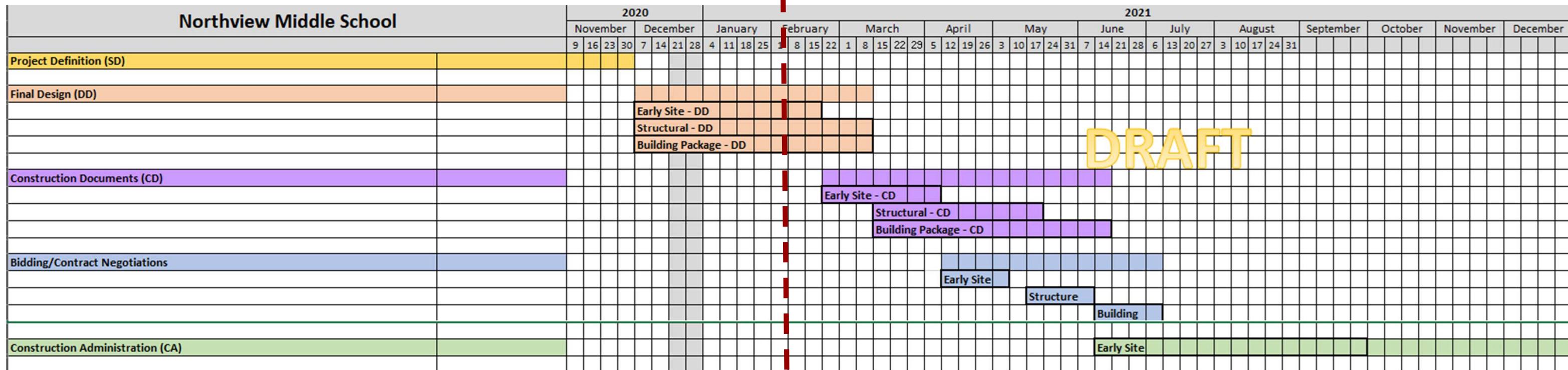
Construction Design Process Update

February 10, 2021



New Northview Middle School

Schedule



Planned Bid Packages

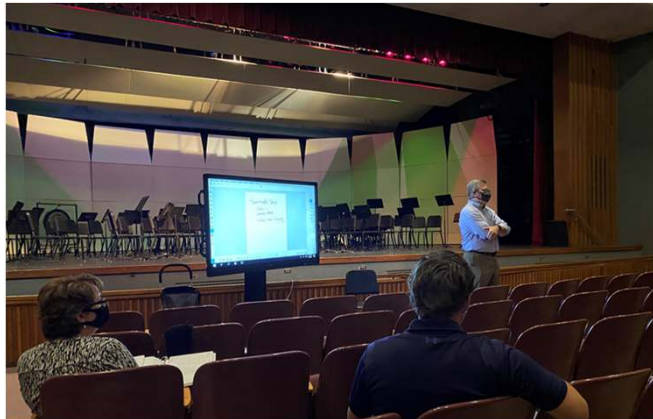
- **Site Development - May**
- **Structural Foundations/Steel - June**
- **Building - July**

Construction Mobilization - June 2021

Construction Complete - Summer 2023

New Middle School

Process & Engagement




MSD of Washington Township

New Northview MS

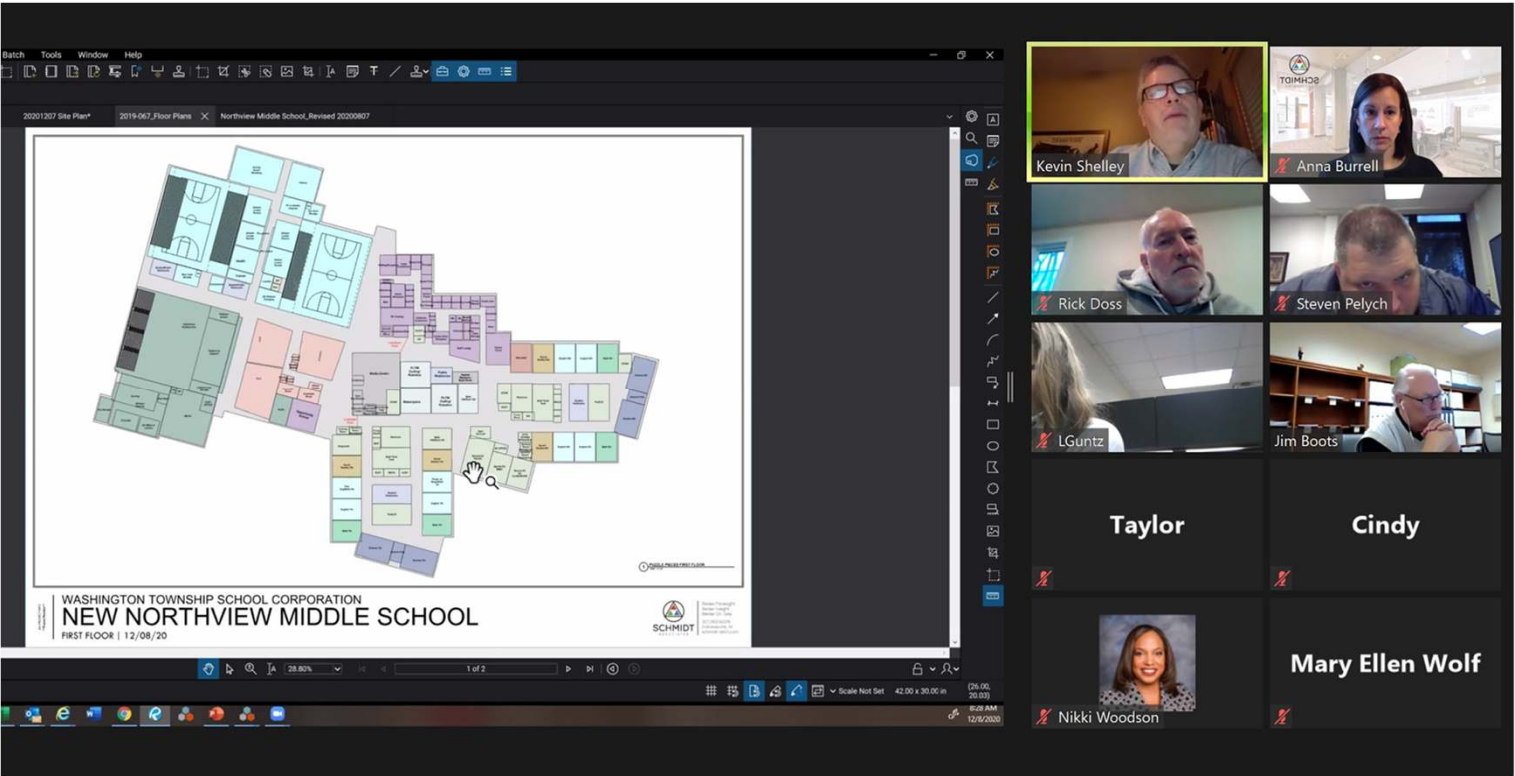
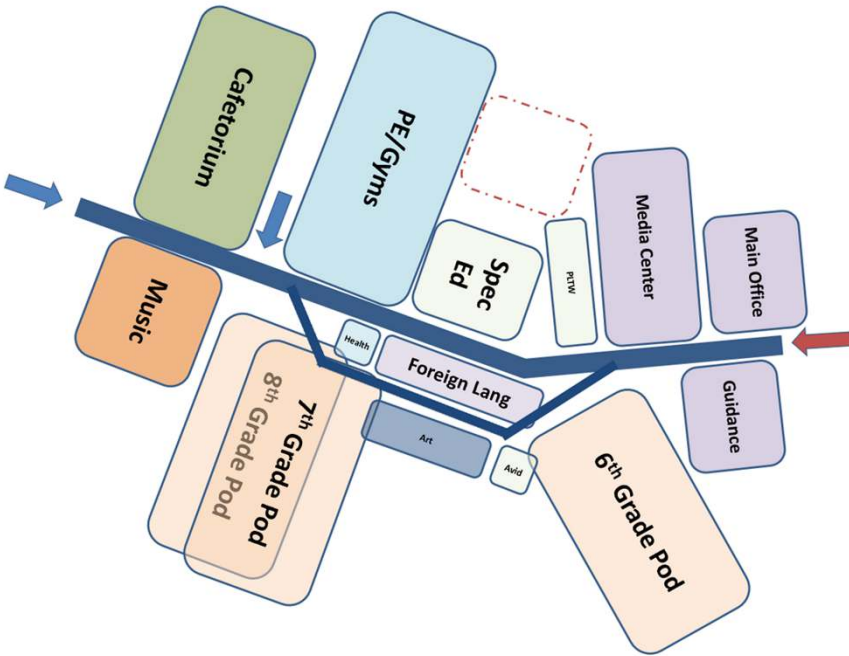
26 Op.'s

7 Stds/Sect

SCHMIDT

1,050 Students

Category	Course	Project d Number of Student	Project d Number of Staff Persons	Number of Sections Require d	Number of Spaces Required	Net Square Footage per space/person	Total Square Feet Required
Core Academics							
Language and Literature							
	English 6th, 7th & 8th	1806		69	10	900	
	English 6th				2	900	
	English 6th (Was Reading 6th)				1	900	
	Flex 6th (Eng/Math)				1	900	
	English 7th				2	900	
	Flex 7th (Eng/Math)				1	900	
	English 8th				2	900	
	Flex 8th (Eng/Math)				1	900	
	Math 180				1	900	
	Read 180				1	900	
	Speech/Flex			0	900		
							10,800
Mathematics							
	Math 6th	1367.5		53	6	900	
	Math 7th				2	900	
	Math 8th				2	900	
					2	900	
							5,400
Physical and Health Education							
	Health	225.75		9	1	900	
							900
Sciences							
	Science	1009.2		39	6	1,250	
	Science 6th				2	1,250	
	Science 7th				2	1,250	
	Science 8th				2	1,250	
	Science Prep				3	300	
							8,400
Individuals and Societies							
	Social Studies	844.94		32	6	900	
	Social Studies 6th				2	900	
	Social Studies 7th				2	900	
	Social Studies 8th				2	900	
							5,400
Language Acquisition							
	Foreign Language	737		28	4	0	
	Foreign Language				4	900	



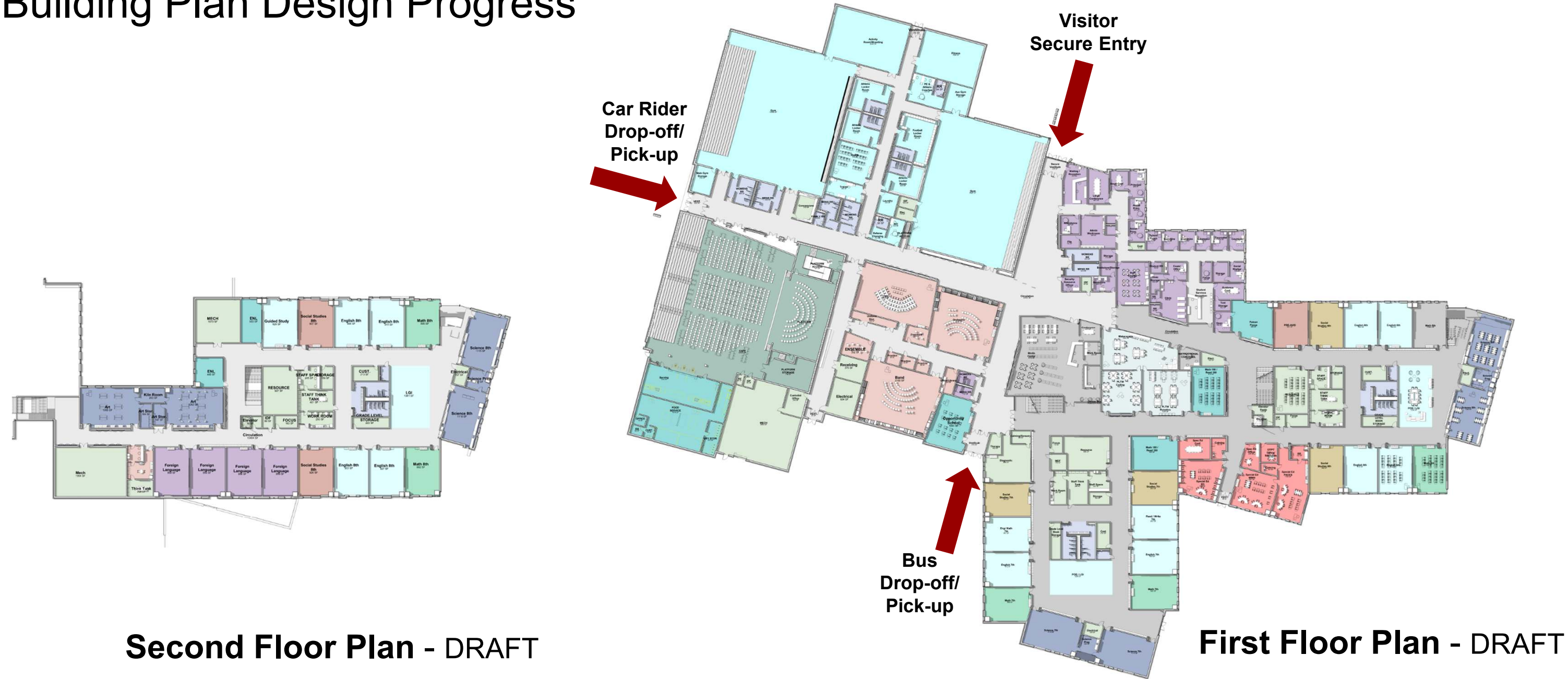
New Northview Middle School

Site Design Progress



New Northview Middle School

Building Plan Design Progress



New Northview Middle School

Building Design Progress Images

